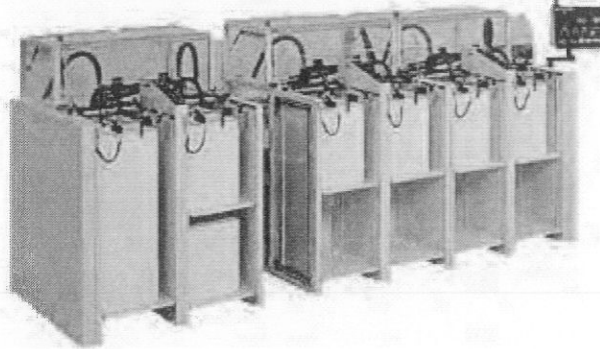


Modulen

Bringing big guillotine features to the smaller formats.
Horizontal deep-bin collator

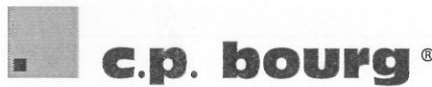


Product information

MODULEN S & A-2 COLLATORS
SUPERIOR PRODUCTIVITY & QUALITY

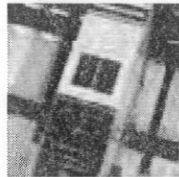
THE BOURG MODULEN COLLATOR EXPANDS AS YOUR BUSINESS EXPANDS
...FROM 4 TO 400 WORKSTATIONS.

The Bourg Modulen S collator is a remarkably versatile vacuum fed system that is modular in design. There's no need to over-buy; just select the system you need now and it will grow to fit your work profile. The initial module has two feed stations and the main control console. Each additional module contains two feed stations.

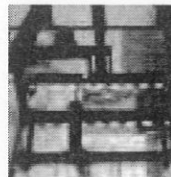


This remarkable vacuum-feed system can handle a variety of stocks, from one-carbon paper to 16-page signatures, in sheet sizes from 5 1/2" x 6 7/8" to 13 3/4" x 19 5/8". Also, Bourg's A-2 Modulen provides an expanded sheet size of 5 1/2" x 6 7/8" up to 17 1/2" x 25". Any combination of stock weights and sizes can run as an intermix. Speeds are variable from 1500 up to 6000 sets per hour.

MODULEN COLLATOR FINISHING ACCESSORIES



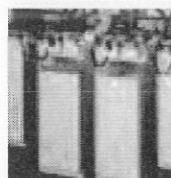
Optional Multi-Pick/Insertion Program
this feature lets you create customised sets by feeding multiple sheets from any station and/or programming individual sheet or divider insertions anywhere in the collating sequence



Dual Head Vacuum Feed
With air blast sheet separation. Lets you collate stocks of any weight, finish or condition including web, newsprint and wallpaper samples, plus signatures and other difficult stocks.



Optional Signature Cassettes
Continuous top-load, bottom-feed cassettes transform your flat sheet Modulen collator into a signature gatherer. They allow the gathering of signatures up to 16 pages on 80gsm stock from any cassette equipped station



Large Capacity Stations Optional
With a large capacity station you can run up to 85mm of stock, maximising our top load/bottom feed design. In addition a dual tray loading system enables preloading of the next job while the collator is running.

	S	A-2
Max. size of paper	13 3/4 x 19 5/8" (350 x 500 mm)	17 1/2" x 25" (445 x 675mm)
Min. size of paper (standard)	5 1/2" x 6 7/8" (140 x 175mm)	5 1/2" x 6 7/8" (140 x 175mm)
Min. size of paper (on request)	4" x 4" (101 x 101mm) and less	4" x 4" (101x101mm) and less
Sets per hour	1500-6000 set/hour*	1200-5000 sets/hour*
Load height	33 1/2" (850mm) high pile	33 1/2" (850mm) high pile
Floor space required	32 1/2"x43" (820x1090mm) module	41"x48 1/4" (1042x1230mm) module
Weight	453 lbs (206 kg) module	515 lbs (234kg) module
Power consumption	1850 W/module	1850 W/module
Voltage	220V single phase 220,380,415V three phase	220V single phase 220,380,415V three phase
Max. ambient temp.	104° F/40° C	104° F/40° C
Min. ambient temp.	32° F/0° C	32° F/0° C
Optimal relative humidity	75%	75%

