

# Apollo Compensating Stacker

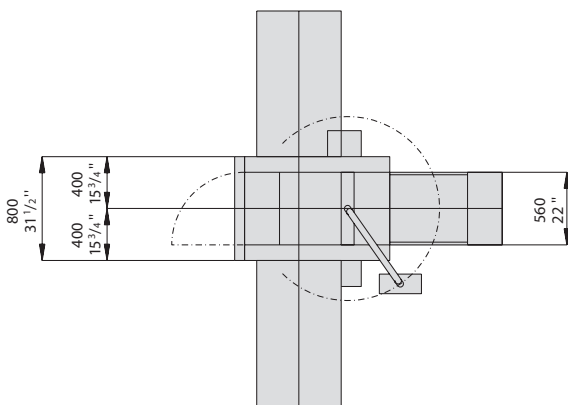
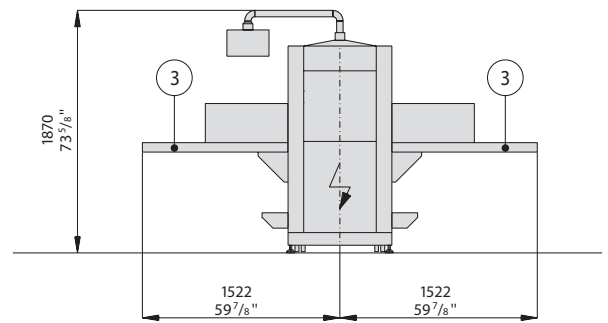
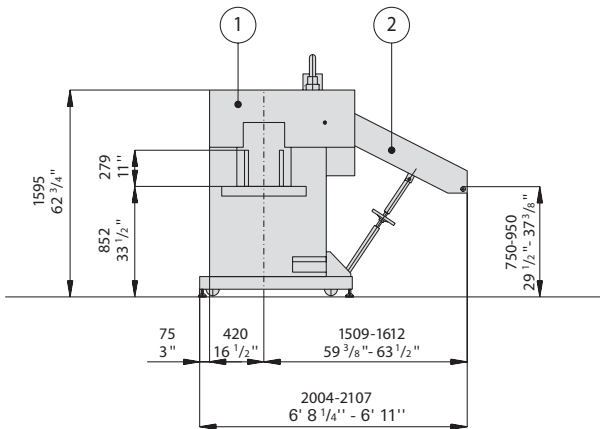
## Technical specifications



<b>Mechanical speed</b>	maximum 16,000 cycles per hour		
<b>Size range</b>	in mm (in ")		
	A maximum	450 (17 3/4)	single-sided ejection
		420 (16 1/2)	alternate delivery
	A minimum	140 (5 1/2)	
	B maximum	320 (12 5/8)	
	B minimum	100 (4)	
	C maximum	40 (1 9/16)	
	C minimum	1 (0.4)	(or 8 pages)
<b>Layer compartment height</b>	140 mm (5 1/2")		
<b>Stack height</b>	280 mm (11")		
<b>Electrical power requirements</b>	stacker incl. control system	0,75 kW	
<b>Compressed air consumption</b>	6 bar	17 Nm <sup>3</sup> /h (10 cfm at 87 psi)	
<b>Weight</b>	720 kg (1,580 lbs)		
<b>Cycle time</b>	Single-sided ejection	1.5 sec	
	Alternate delivery	1.2 sec	

Dimensions, design and equipment configuration subject to change.

- 1 Apollo Compensating Stacker model 1540
- 2 Infeed belt
- 3 Roller delivery table model 1540



Sales and Service

Müller Martini Marketing AG  
 Untere Brühlstrasse 13  
 CH-4800 Zofingen, Switzerland  
 Phone +41 (0)62 745 45 75  
 Fax +41 (0)62 751 55 50  
 info@mullermartini.com  
 www.mullermartini.com