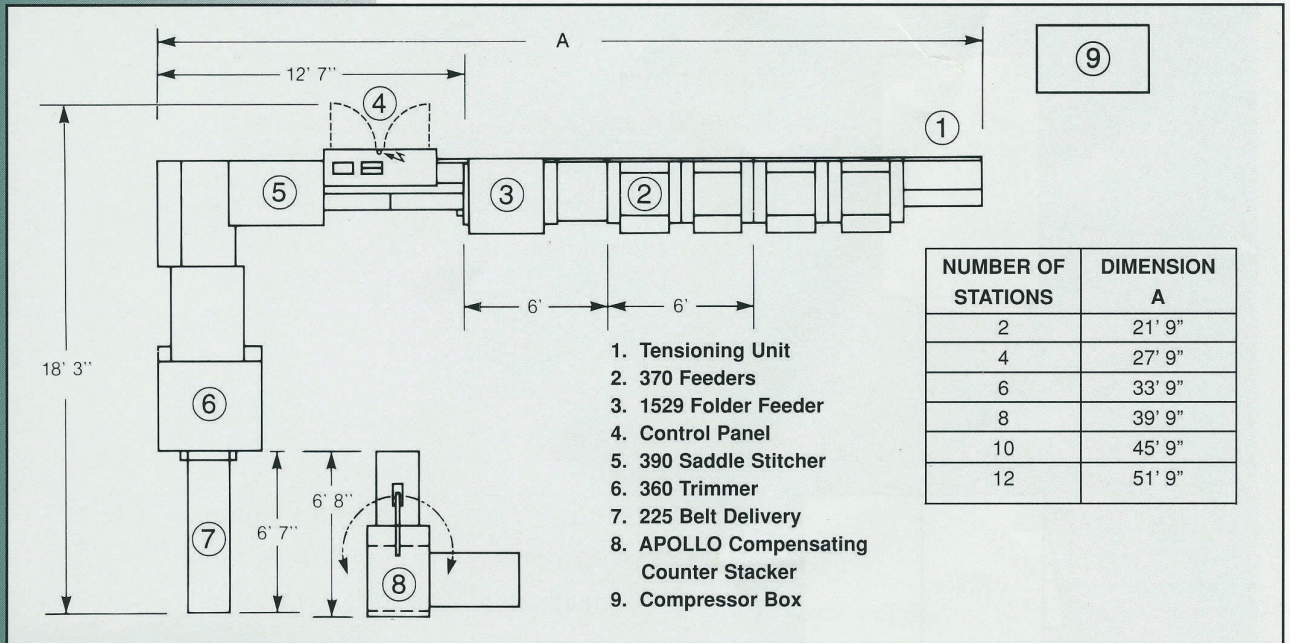


MULLER MARTINI

PRIMA

Saddle Stitcher



SPECIFICATIONS

390 Saddle Stitcher, 370 Feeder, 360 Trimmer, 225 Belt Delivery

Mechanical speed, max.	13,000 c/hr
Maximum book thickness	1/2"
Electrical requirements	460V, 60 hz, 3-phase
Power, w/o compressors	40 kW
Power, compressor box	20 kW
House air required (8 feeders)	100 cfm @ 90 psi min.
Weight of heaviest component	3,600 lbs.

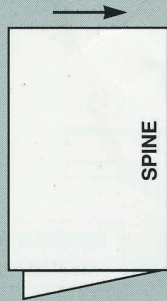
Muller Martini Corp.
P.O. Box 3360
Smithtown, NY 11787-0811
Phone: (516) 582-4343
Fax: (516) 348-1961
Parts Fax: 1-800-258-6855
www.mullermartiniusa.com

MULLER MARTINI

MULLER MARTINI

PRIMA

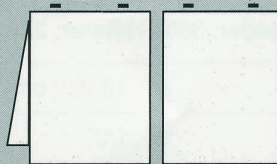
Saddle Stitcher



Normal Trim	Width x Spine
Trimmed maximum	12" x 18-3/4"
Trimmed minimum*	3" x 4-1/16"
Untrimmed maximum	12-1/2" x 18-7/8"
Untrimmed minimum	4-1/4" x 6"



Center cut	Width x Spine
Maximum trimmed	12" x 9-3/8"
Minimum trimmed*	3" x 3-1/2"



Punch cut	Width x Spine
Knife width	1/4"
Maximum trimmed	12" x 9-1/4"
Minimum trimmed*	3" x 3-1/2"

**with accessories, included*

Design, specifications and measurements subject to change