

TABLE BANDING MACHINE

model TB 26

Banding of print products of all sorts

- » increased machine output (+ 20 %)
- » extended banding width to 260 mm
- » machine adjustments without any tool
 - » maintenance-free

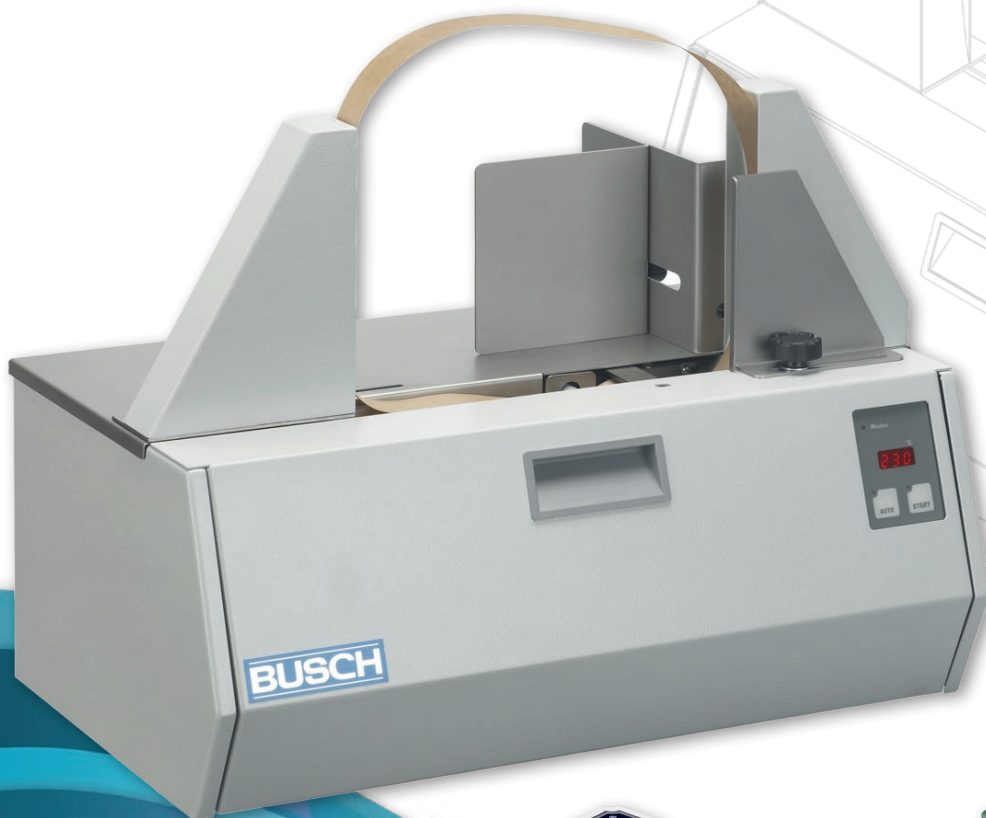


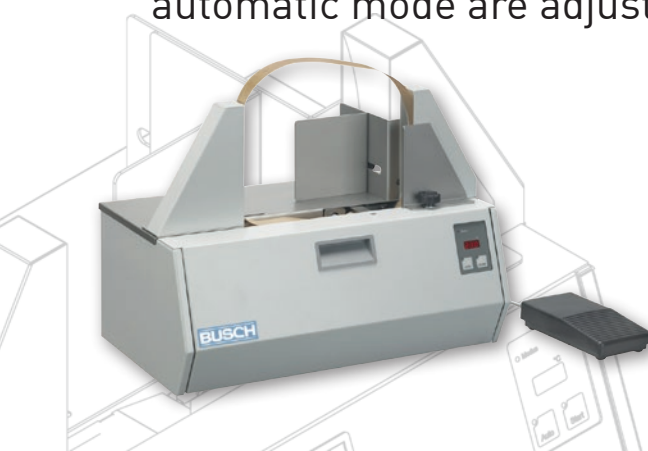


TABLE BANDING MACHINE

model TB 26

Proven performance within the smallest space

- » highest reliability and multi-purpose use
- » very user friendly due to adjustable side and rear stops and easy tape reel exchange
- » electronic sealing temperature control guarantees constantly perfect banding results
- » loop size, tape tension and time delay for releasing the banding process in automatic mode are adjustable



Activating the banding process :

- » single stroke activated by push-button
- » single stroke activated by foot pedal
- » automatic activation by sensor

Option

Large Reel Stand GRS, mobile and height-adjustable

- » reduces the number of reel changes for high volume production
- » very flexible use because of 4 movable casters, two of which can be fixed
- » height-adjustable (663 - 932 mm) for an operator-friendly working height
- » only one electrical connection for banding machine and large reel stand

Banding with large reels

- » Kraft paper tape (reel length : 800 m)
- » Polypropylene foil (reel length : 1000 m)

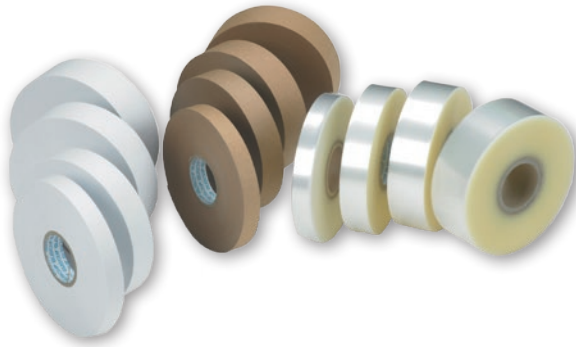




Banding with BUSCH Banding Material

Model TB 26 I for 20 and 30 mm tape width

Model TB 26 II for 40 and 50 mm tape width



- » perfect banding results with high-class banding material from Gerhard Busch GmbH
- » banding with coated Kraft Paper Tape or transparent Polypropylene Foil Tape
- » made-up in Germany

| | Kraft Paper Tape | | Polypropylene (PP) Foil Tape | |
|-------------|--|-------|---|---------------|
| colour | brown | white | transparent | |
| quality | 70 g paper coated on one side with 23 g of Polyethylene (PE) | | PP 100 µm (recommended due to higher loop stability) | PP 80 µm |
| reel length | approx. 150 m | | approx. 150 m | approx. 200 m |

Small reels for insertion in Table Banding Machine

- » inner reel core diameter: 50 mm
- » outer diameter: approx. 160 mm



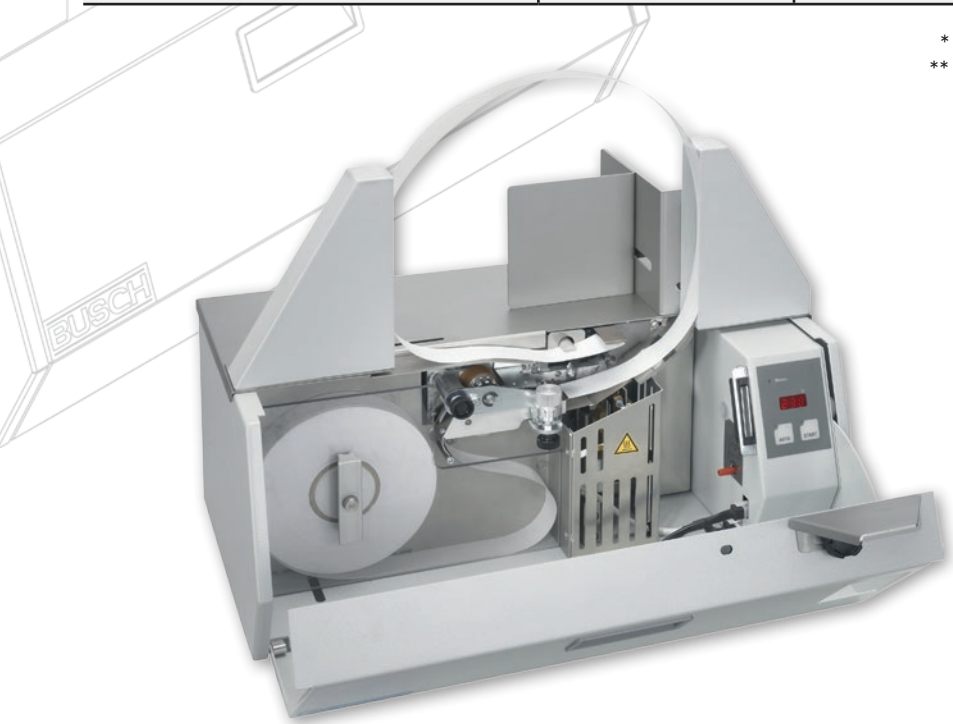


TABLE BANDING MACHINE

model TB 26

| Technical data | | TB 26 I | TB 26 II |
|---|--------------|--|-----------------------|
| Tape width | | 20 and 30 mm | 40 and 50 mm |
| Machine output | | 25 - 30 strokes / min | 23 - 28 strokes / min |
| Max. dimensions of products to be banded | length | unlimited | |
| | width | 260 mm for banding with Kraft Paper Tape 240 mm for banding with Foil Tape (PP 100 µm)* 180 mm for banding with Foil Tape (PP 80 µm)** | |
| | height | 170 mm | |
| Machine dimensions | length | 506 mm | |
| | width | 323 mm | |
| | height | 390 mm | |
| Weight | net / gross | 25 / 28 kg | |
| Sound pressure level as per EN 13023 : 2003 | | max. 75 dB(A) | |
| Power requirements (A.C. single-phase) | 230 V, 50 Hz | 160 Watt | |
| | 110 V, 60 Hz | 160 Watt | |
| Power consumption | 230 V, 50 Hz | 0,7 A | |
| | 110 V, 60 Hz | 1,5 A | |

* recommended due to higher loop stability
 ** possible, but lower loop stability



Gerhard Busch GmbH

Brookdamm 28 | D-21217 Seevetal | Germany
 Tel. +49 (0)40 769159-0 | Fax +49 (0)40 769159-33
 info@buschgraph.de | www.buschgraph.de

Stanzmaschinen Die-Cutting Machines
Bündelmaschinen Banding Machines
Späneförderbänder Waste Conveyors
Stapelwender Pile Turners
Schneidemaschinen Guillotines
Schneidperipherie Peripherals for Guillotines