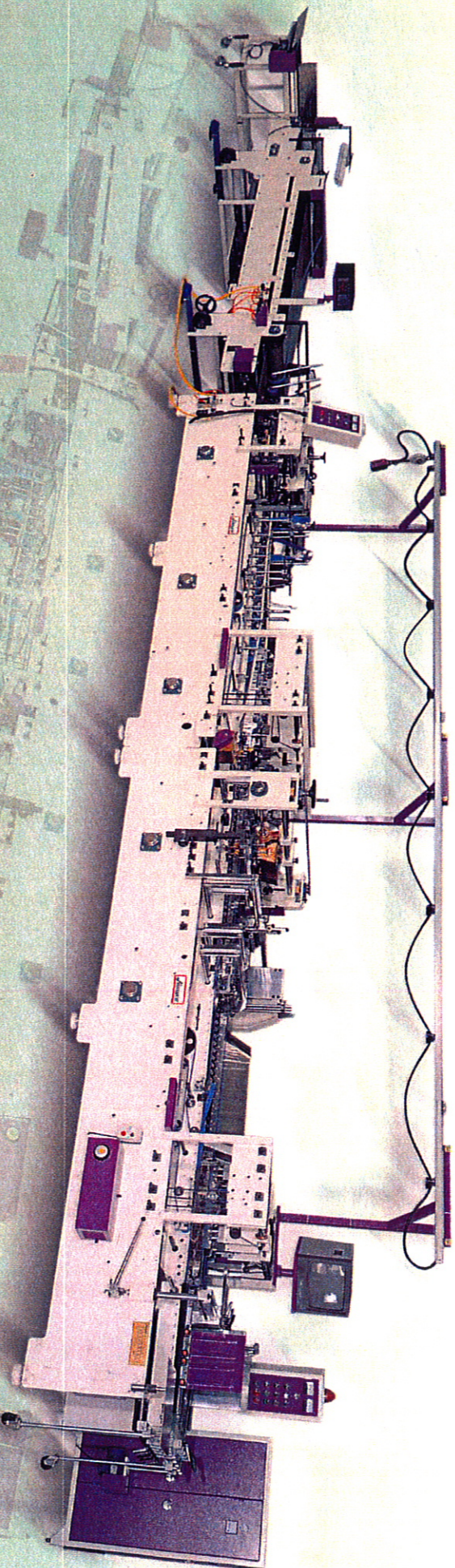


Jimmy

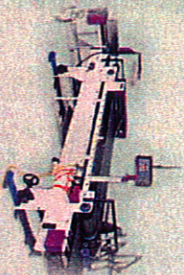
JK-1000PC

高速自動糊摺盒機

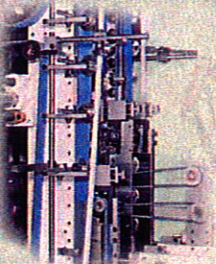
Automatic Folder Gluer



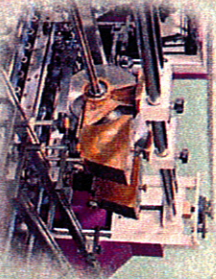
輸送部 Delivery



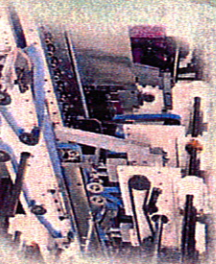
本折部 Folder



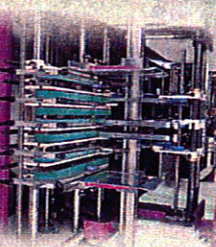
上糊部 Gluing Section



預折部 Pre-folder



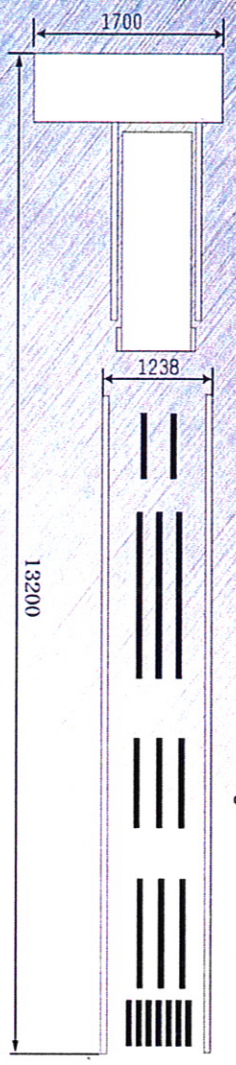
送紙部 Feeder



基本平面圖 FLOOR PLAN

JK-1000PC

- 輸送部 Delivery
- 壓著部 Trombone
- 本折部 Folder
- 底折部 Bottom Gluing
- 折返部 Pre-Folder
- 給紙部 Feeder



規格

1. 適用紙質：紙板、E浪美妝瓦楞紙。
2. 基本形式：一般邊貼、兩側邊貼、底貼。

SPECIFICATION

1. Used Materials : Cardboard. E-flute cougated and printed board.
2. Fundamental Pattern : Standard folding box, double sides box, crashlock bottom box.
3. Speed : 最快200米/分 : Max. 200M/min.
4. 糊劑 : 溶質性。 : Emulsion type (Fluid).
5. 所需電力 : 13.5KW : 13.5KW.
6. 機械重量 : 6.000Kg : 6.000Kg.

★本目錄僅供參考，特殊型式可另行設計
This catalog is for general reference only, special design is available.

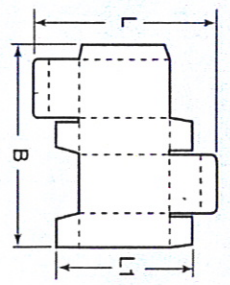


晉雨機械股份有限公司
JINNYEU MACHINERY CO.,LTD.

公司：台中市南區光明五巷16號
Factory: No.16, Kuang Ming 5 Lane, South
Dist., Taichung City, Taiwan, R.O.C
TEL: 886-4-22634920, 22624291
FAX: 886-4-22623949

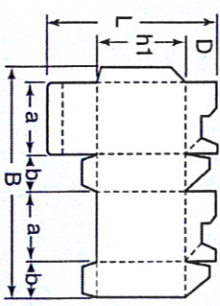
製盒尺寸 Box styles and sizes

糊邊盒
Straight-line
folding boxes



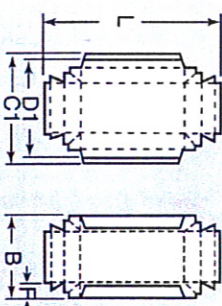
- B mm 138-1000
- L max. mm 800
- L1 min. mm 80

勾底盒
Lock-bottom
boxes



- B mm 150-900
- L max. mm 800
- D max. mm 150
- h1 min. mm 80
- a min. mm - 40
- b min. mm 30

兩側邊貼盒
Double wall
boxes



- B mm 130-760
- L mm 110-800
- C1 max. mm 900
- D1 max. mm 890
- F min. mm 15