

Description

The 9,000 c/hr. Presto Saddle Stitcher offers all the advantages required of a compact machine, for processing all size runs and used primarily for product sizes in the range from 8 1/4" x 11 3/4" to 4 1/8" x 5 7/8": menu guided setup, quick changeover, reliable gathering and stitching, an in-line three-knife trimmer and an efficient compensating stacker. The perfect entry-level, modular system for automated saddle stitching.

Advantages

- 9,000 c/hr.
- Larger size range
- Made in the USA
- Economical and Productive
- High/low folio, gripper and suction opening
- Flying stitching heads
- Menu-guided PLC controls
- 1528 folder feeder
- Quick makeready on handwheels and scales
- Flat loading pockets



Features

Greater productivity —

The heavy-duty machine allows you to run at much higher speed for a lower cost-per-book, and makes you more competitive with larger operations.

Product Quality —

Flying stitching heads, without stop-and-go motion, assure precise stitching and less wear. The caliper and missing stitch detector assure perfect products.

Versatility —

You'll be able to handle a wider variety of signatures —

with high and low folio laps or without lap. The Presto operates in 1:1 or 1:2 modes, to run difficult signatures or to keep pace when loading bulky products.

Money-making accessories —

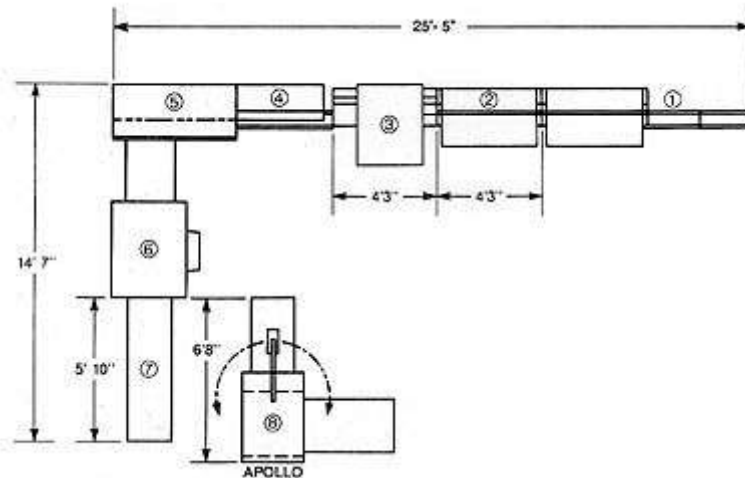
Eliminate extra production steps with a folder feeder that feeds, scores and folds covers in-line; 4th and 5th knife for 2-up production; 1-hole punch for calendars; 3-hole punch for ring binder inserts; loop stitching heads; or a compensating counter stacker to reduce handling.

Single Source Responsibility —

The Presto is made in the USA and is designed, manufactures, installed and serviced by Muller Martini. Our service engineers are stationed all around the country. We train your personnel at installation and offer you hands-on operator training.

Specifications

1550 Saddle Sticher, 1551 Feeder, 1522 Trimmer, 1511 Belt Delivery



- 1. Hand Feed Station
- 2. 1551 Feeders
- 3. 1528 Folder Feeder
- 4. Control Panel
- 5. 1550 Saddle Sticher

NUMBER OF STATIONS	TOTAL LENGTH
2	14' 6"
4	18' 9"
6	23'

- 6. 1522 Trimmer
- 7. 1511 Belt Delivery
- 8. APOLLO Compensating Counter Stacker

8	27' 3"
10	31' 6"
12	35' 9"

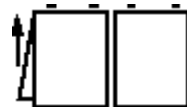
Mechanical speed, max.	9,000 c/hr
Maximum book thickness	3/8"
Electrical requirements	230/460V, 60 cycles, 3-phase
Power, with one compressor	8.9 kW (11.9 HP)
each additional compressor	4.8 kW (6.4 HP)
House air requirements	15 cfm @ 90 psi



* with accessories: 3" x 3-7/8"	
Normal Trim	WIDTH x SPINE
Trimmed maximum	12" x 14-1/4"
Trimmed minimum*	3" x 5-1/2"
Untrimmed maximum	12-1/4" x 14-3/8"
Untrimmed minimum	3-1/4" x 5-3/4"



Center Cut	WIDTH x SPINE
Trimmed maximum	10-3/4" x 7-1/16"
Trimmed minimum**	3" x 5-3/4"



1/4" Punch Cut	WIDTH x SPINE
Trimmed maximum	10-3/4" x 7"
Trimmed minimum*	3" x 5-1/2"

* *with accessories: 3" x 4-1/2"