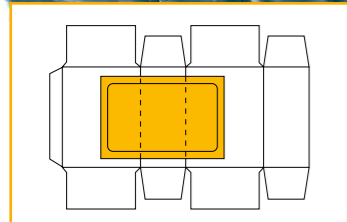
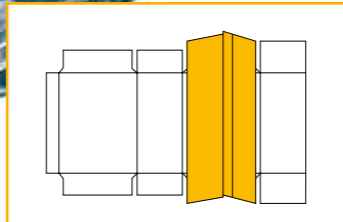


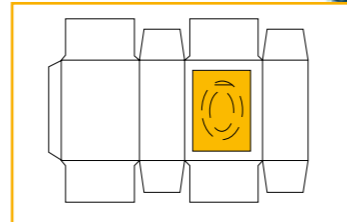
► Options for special applications:



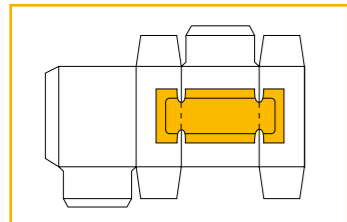
Continuous perforating unit



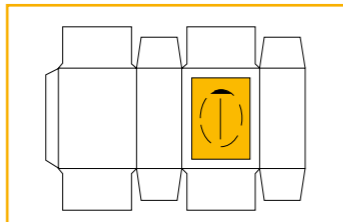
Tube forming station (bag in the box)



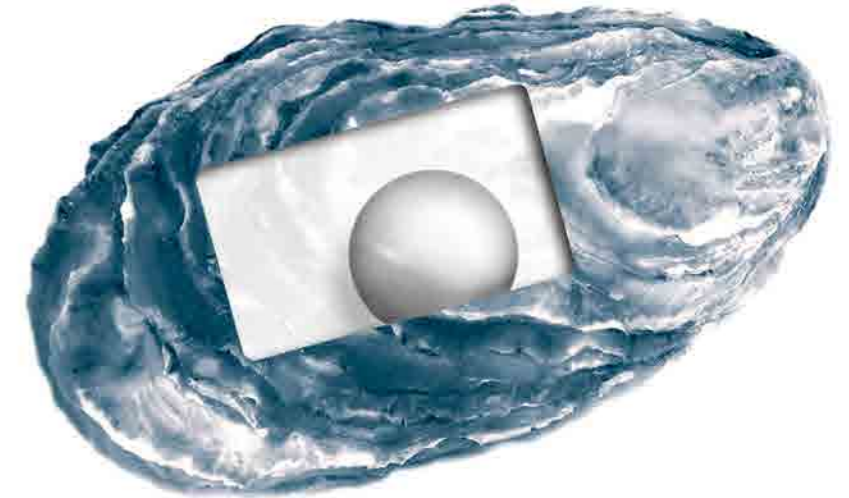
Profile knife unit



Punching and Scoring unit



Intermittent length cutting or perforating unit



► Our Product Range:

- Window patching machines for carton blanks
- Pick & Place window patching machines
- Print inspection machines for carton blanks
- Film sealing machines for Gable Top cartons
- Folding box gluing machines
- Automatic stacking systems for
  - window patchers
  - narrow web flexo printing machines
- Compact disc sleeve machines
- CD/DVD tray placing machines
- Machines for special applications (on request)

**Kohmann GmbH & Co. KG**  
Maschinenbau



► P.O. Box 10 06 55  
40806 Mettmann  
Germany

Benninghofer Weg 7  
40822 Mettmann  
Germany

T +49-21 04-9146 0  
F +49-21 04-9146 50  
sales@kohmann.de  
www.kohmann.de

► **F-1000 Classic**  
Window Patching Machine

► **Classic and Reliable**

► **Classic:**

Innovative technology combined with proven engineering offers the best in productivity and efficiency. Low investment costs and high processing performance guarantee future success and lifetime durability. These principles guide the design of our window patching machines.

► **Reliable and Versatile:**

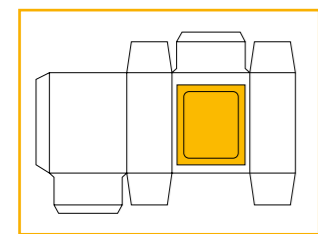
The single roller glue unit is fully retractable and ensures full access to this station. Setting and cleaning is carried out within minutes. Latest design of the timed belt feeder allows converting of solid and corrugated board up to 6 mm thickness.

► **Convincing:**

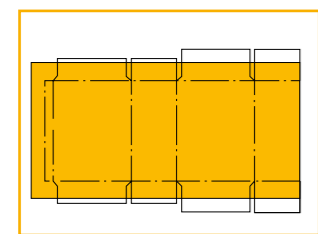
- Short set-up times thanks to computer aided setting assistance
- operator friendly thanks to data input via touch screen panel
- glue and film position can be adjusted during machine running
- Automatic suction air compensation of the feeder
- Servicing via remote maintenance system

► **Flexible:**

Whether you require a simple window on a standard blank or a more complicated product: Our design allows the use of various options, either installed in our factory or retrofitted at a later point.



Normal window



Lining material

► **Options:**

- Punching and scoring unit
- Tube forming station for production of inner tubes
- Intermittent working length cutting or perforating unit
- Rotary profile

All Options can be retrofitted!

► **Specifications:**

Adjustment range, single lane operation

	min.	max.
Blank length, mm	100	710
Blank width, mm	80	1000
Film length, mm	40	520
Film width, mm	30	840

Adjustment range, double lane operation

	min.	max.
Blank width, mm	80	485
Film width, mm	depending on blank position	

Total power consumption: 9 kW

Output figures

F-1000 Classic		
	1-lane	2-lane
1-up operation, blanks over 330 mm	max. 150 pcs/min.	max. 300 pcs/min.
2-up operation, blanks under 330 mm	max. 300 pcs/min.	max. 600 pcs/min.

Änderungen vorbehalten/Subject to change