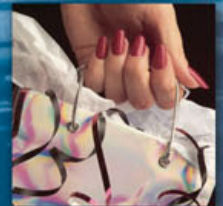
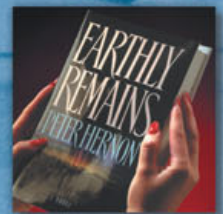




Professional Finishing Solutions

Voyager³



GBC
Voyager³

For High Volume, One-Sided Lamination

HIGH VOLUME, ONE-SIDED LAMINATION

Pocket Folders | Brochures | Packaging | Book Covers | Magazines | Gift Bags

VOYAGER³

The GBC Voyager³ is a high-speed, laminating system that's in a class of its own for versatility, productivity and value. This universal, one-sided laminator is complete with an integrated feeder and separator and is designed to easily run a variety of high-speed commercial thermal films.

A proven performer, the Voyager³ warms up quickly to run all day, every day, and provide high-quality, cost-effective finished products.



LAMINATOR FEATURES

- Pneumatically controlled pressure roller for various stocks.
- Adjustable bow roller to smooth film.
- Pneumatically controlled airshaft brake for improved film tension control.
- Adjustable film slitting capability for optimum film stock usage.

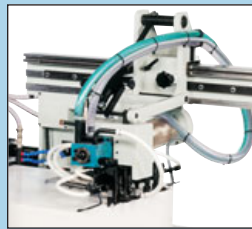
SEPARATOR FEATURES

- Adjustable decurling bar with large roller assures flat sheets.
- Perforating wheel consistently perforates the sheets for easy separation without timing issues.
- Pneumatically controlled separator rollers provide accurate separation and reliable performance.
- Skewing wheel makes separation of films easy.



AIRSHAFT FEATURES

- Enables easy loading and adjusting of film rolls on film shaft.
- Hand switch for locking and release of film cores.



FEEDER FEATURES

- New electronic control for easy set-up of sheet length and overlap.
- Dual system feeder-head for lifting and advancing sheets increases accuracy and consistent feed.
- Up to 32" pile height allows for long production runs on a variety of stocks.
- Mobile pallet permits off-line loading for increased production.



WATER HEATER FEATURES

- New enclosed loop water-heated chrome roller for consistent temperature control (within 5° F) throughout entire run.
- Pneumatic pressurizing system assures constant water pressure.
- Auto shut-down for easy, convenient system cooling.

FILMS

- GBC HI-TAC[®] LAY-FLAT[®] Film
- GBC HI-TAC[®]
- GBC LAY-FLAT[®] Film
- GBC NAP-LAM[®] II
- Polyester
- Polypropylene
- AGS
- GS
- Matte
- Gloss
- Satin

APPLICATIONS:

- Book Covers
- Magazine Covers
- Packaging
- Gift Bags
- Pocket Folders
- Brochures
- Labels

SPECIFICATIONS:

Sheet Size:	Min. 8.5" x 11" (21.6 cm x 28 cm) Max. 30" x 40" (76 cm x 102 cm)
Maximum Speed:	150 ft./min. (32 m/min.)
Load Capacity:	32" pile height (81 cm)
Product Range:	80 lb. CIS to 18 pt. board (115 to 300 g/m ²)
Floor Space:	5-1/2' x 16' (1.68 m x 4.88 m)
Electrical:	220V AC, 60 Hz
External Air:	100 A 3-phase plus ground
External Water:	8 CFM @ 100 psi minimum Water supply and drain