

Hörauf

**"DEMAND"
THREE KNIFE
TRIMMER**



- Minor format changes in less than 1 minute
- Complete format change in less than 3 minutes
- Reliable PC Based Machine Control
- Easy to use color touch screen for fast programming and troubleshooting
- Versatile one or two person operation
- Four side trimming option available

AMATCO
The Trimmer People

Phone: 515.276.4528 Fax: 515.276.8324
5475 NW Beaver Dr • P.O. Box 380 • Johnston, IA 50131

Hörauf Specifications

Demand

Size Range:		(W x H)
Max. Untrimmed Size	inches	12 ³ / ₈ x 16 ¹ / ₈
	mm	315 x 410
Max. Trimmed Size	inches	11 ³ / ₄ x 16.53
	mm	300 x 420
Min. Trimmed Size	inches	2 ³ / ₈ x 3 ¹ / ₈ / 60 x 80
	mm	300 x 380
Infeed Height:		
Max.	inches	3 ¹ / ₈
	mm	80
Capacity:		
Cycles per minute	up to 20	
Hydraulic Pressure:		
Pre	psi / kp	154 / 70
Main	psi / kp	4400 / 2000
Weight:		
Machinery only	lbs / kg	5500 / 2500
Total Packaged for shipment	lbs / kg	6380 / 2900
Power Requirement: (total)		
	HP / KW	6 / 4.5

Air Requirement: 200 liters per minute at 5 bar (7.06 CFM at 72.5 PSI)

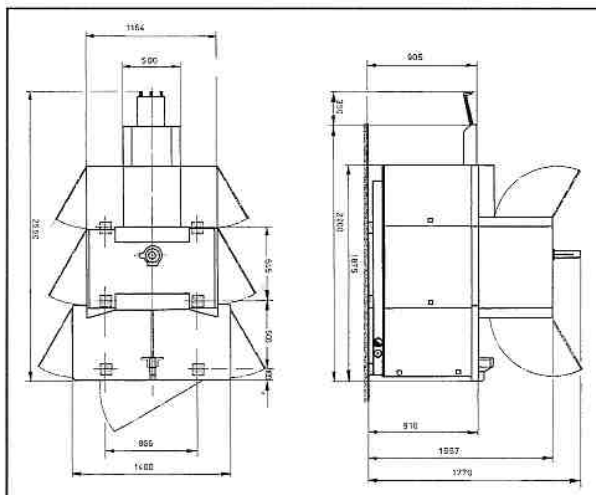
Standard Equipment:

- 1 set of cutting table cassettes (4 pcs.)
- Blown air device for aid in paper waste ejection (house air required)
- Central lubrication system
- Break away head stop (for use with case bound book blocks)
- Outfeed delivery conveyor (1 meter length)
- 2 sets of standard knives in protective boxes
- 10 sets of cutting sticks (30 pcs.)
- Knife setting gauge
- 2 sets of knife holders and supports
- 1 set of tools with tool box
- 4 pressing pad holders
- 4 laminated wood pressing pads for standard sizes

Optional

Accessories:

- Extra knife sets or carbide tipped
- Extra cutting sticks
- Extended delivery conveyor
- Extra knife holders and supports
- Parts for extended sizes
- Parts for four-sided cutting



Method of Operation:

Manual feeding of products to the infeed transport clamp is followed by automatic movement through the clamping and trimming cycles. To achieve the best trim quality, the knives are driven mechanically and the clamping is done hydraulically. Trimmed products can be automatically returned (for one operator mode) or delivered onto the outfeed conveyor with each pile pushing the preceding one. This method eliminates the need for ejection fingers and allows for a smooth delivery of single products.

Automatic cycling (with adjustable timer delay from 0-10 seconds) or push button single cycling can be selected. The programmable PC based controller (windows XP) can store up to 20 jobs. Servo drives set the infeed carriage, head stop and side knives automatically through the easy to use color touch screen panel.

Advantages:

Trimming sequence (front knife before side knives) Ideal for folded signatures and large waste trims

Hydraulic two stage infinitely adjustable clamping

Constant knife speed (independent of production rate)

An 8 degree swing angle provides highest quality of cut and extends knife life, resulting in less overall wear and quieter operation

Automatic pile lifting device for reduced marking during product transport to clamping area

Transport pile clamp is adjustable to accommodate a variety of book thickness and spine length