



MODEL  
**368**

THE MOST SALABLE 368 IN THE  
WORLD AMONG ALL OSAKO MODELS

SYSTEM

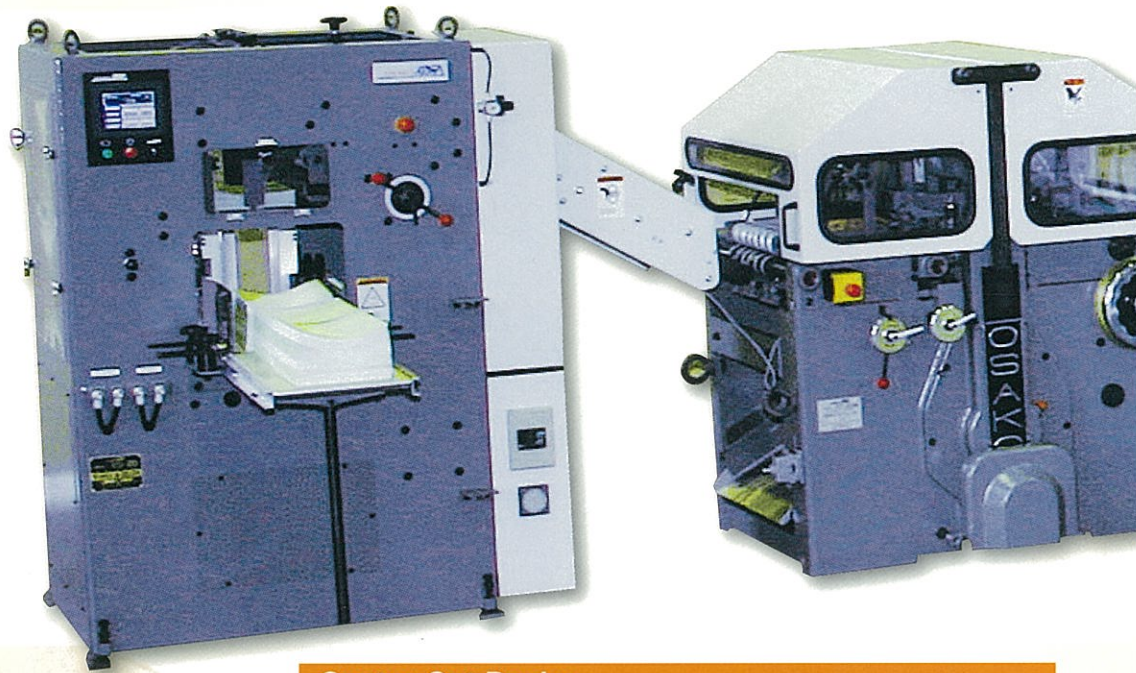
**368**

FULLY AUTOMATIC HIGH  
SPEED SADDLE STITCHER



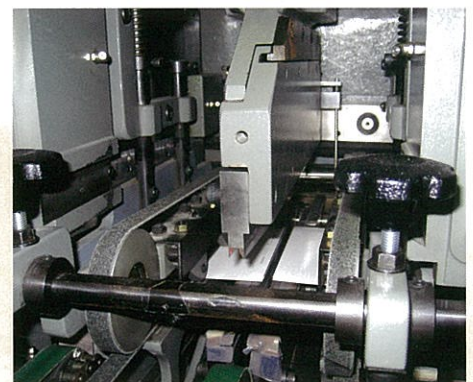


# OSAKO LONG SELLER FOR STABLE OPERATION AND EXCELLENT PRODUCTIVITY AT HIGH SPEED RUNNING



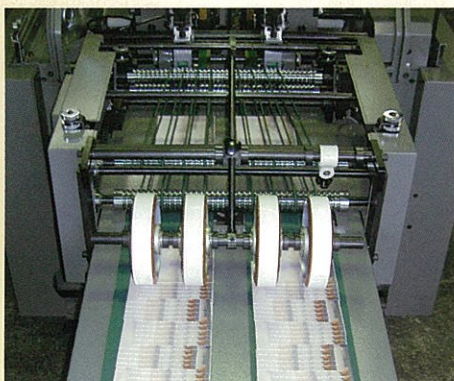
## Center Cut Device

For 2-up production, signatures are cut off at center the same time as the side cutting.  
Cutting Gap: 0, 4, 6mm.



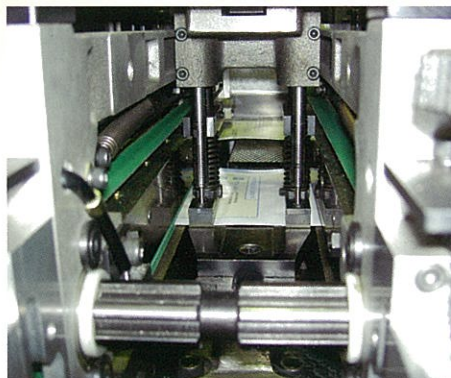
## Delivery Conveyor for 2-up production

This can use normal production, too.  
It has counter system.



## Punching Device

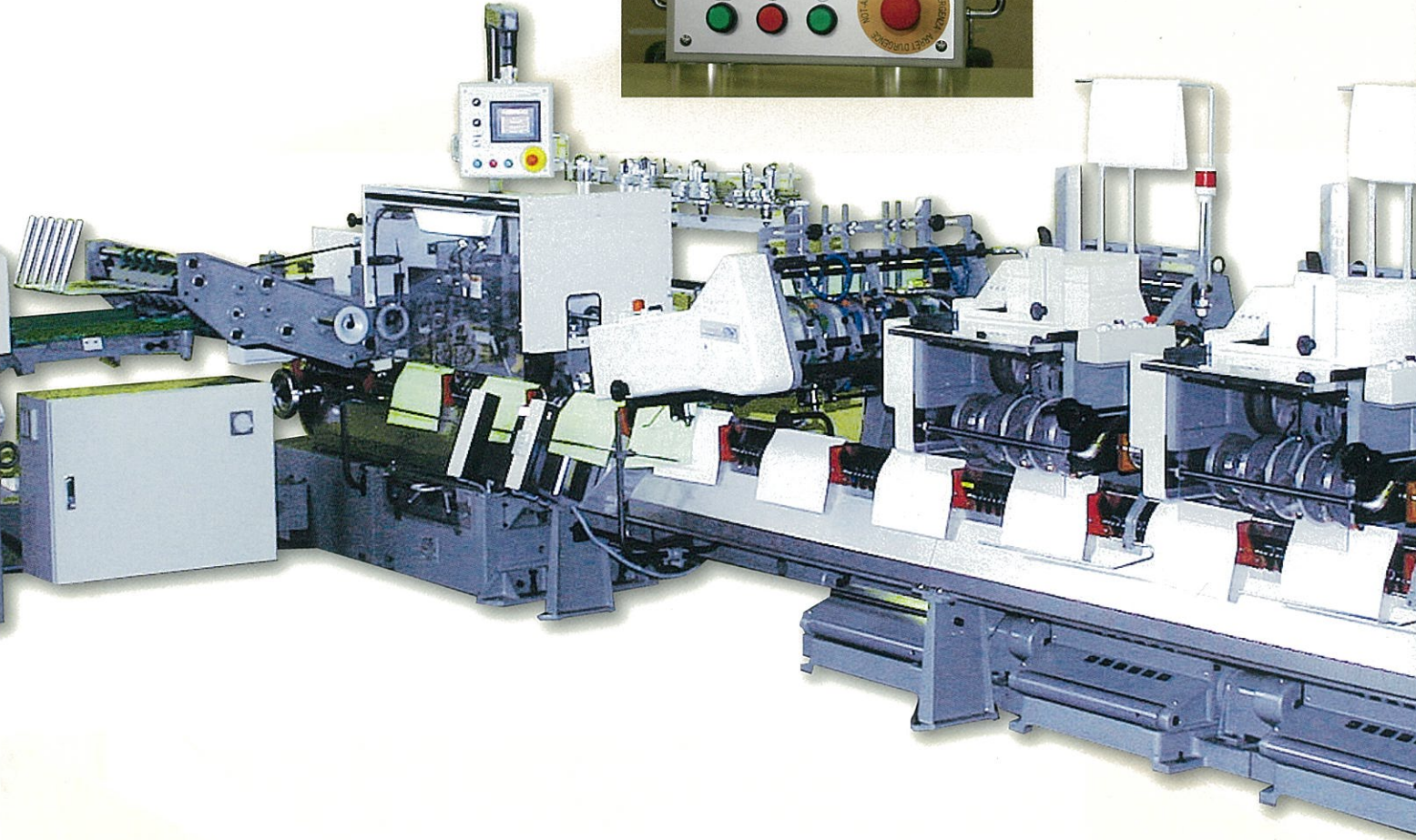
Punch one hole, two holes and oval hole.  
Holes are punched out at the same time as the side cutting.





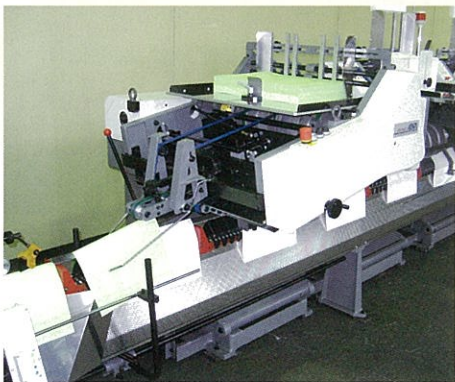
## Center Control Monitor

Every mechanical operation is set up at the central monitor as computer system.



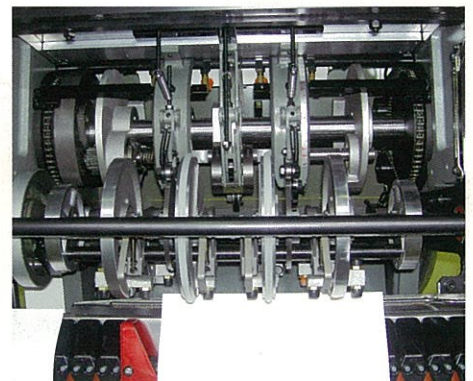
## ORC-305B Folder Feeder

To fold and feed cover paper to gathering chains. No need to fold cover paper before feeding. This unit is doing double performances.



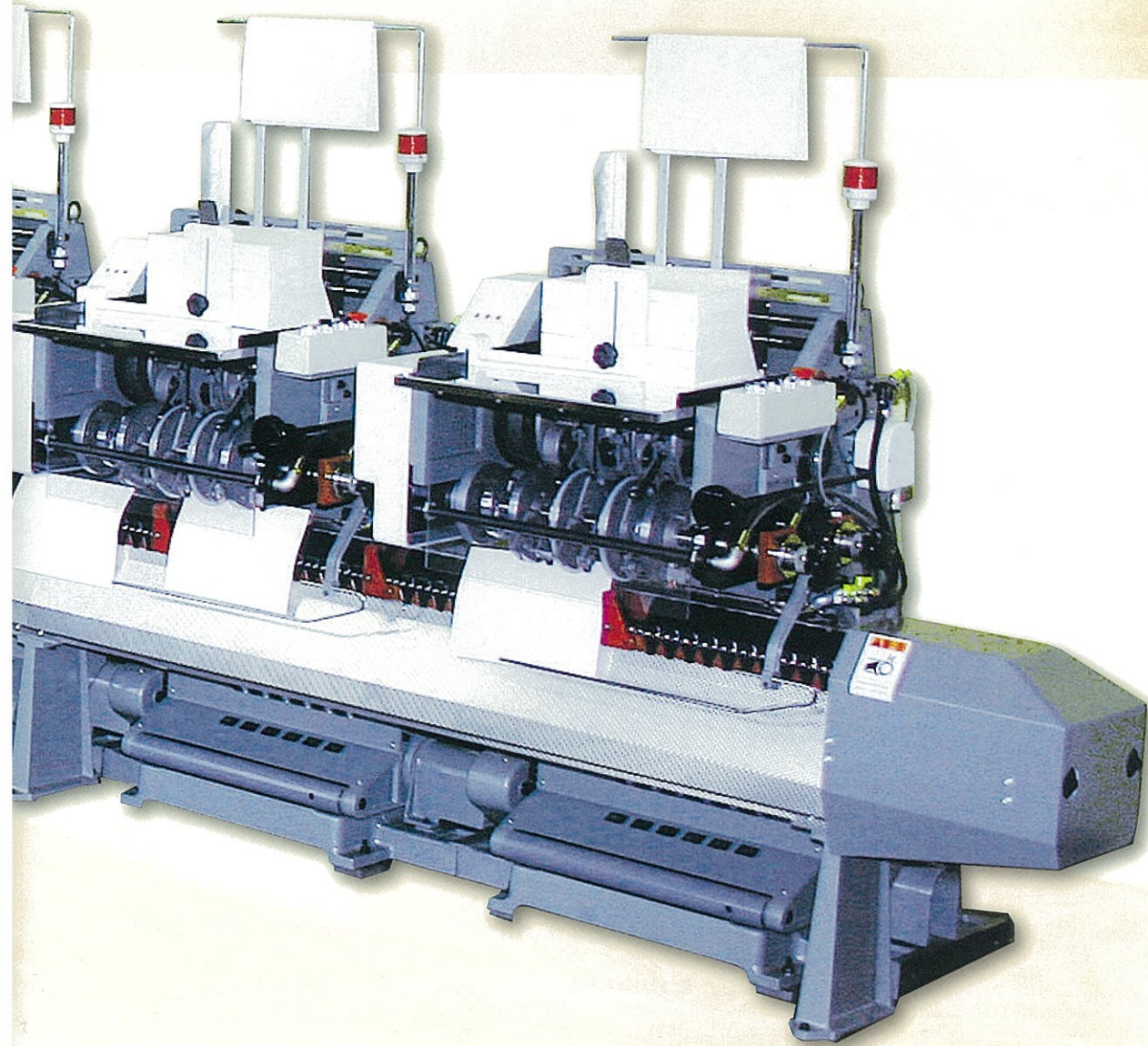
## ORF-821 Rotary Feeder

① It feeds various signatures at high speed. Setup time is short. Both full speed and half speed is set up quickly. Light paper is difficult for fast feeding. In this case the same signature feeds to two sections running at half speed. Signature with lap or with no lap can be fed with no problem.



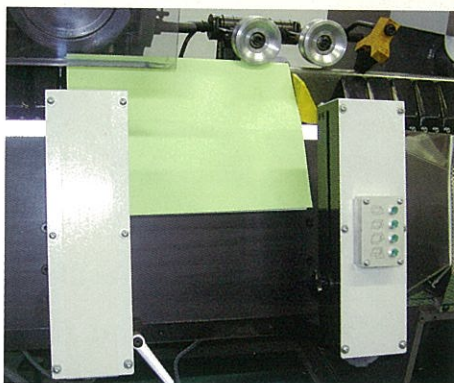
- ② Table is low so that operators easily feed signatures, possible to pile up 400mm high on the table.
- ③ All feeders are tilt back, so that signatures are fed by hand.
- ④ Each feeder has a control box. Operators need not go back to central control box. In order to run, stop or inching each feeder.
- ⑤ In case paper jam happens, machine stops and at the trouble feeds. Light red lamp.





### Signature Scanner

This device to check non aligned signature and eject it into eject tray before stitching.



### Other Options

- Wire Monitor
- Oblique Cutting Inspection
- Synchro Start and Stop
- Side Caliper
- Others



SADDLE STITCHER *ORS-612*

3-KNIFE TRIMMER *OT-323*

ROTARY FEEDER *ORF-821B*

FOLDER FEEDER *ORC-305B*

CROSS-STACKER *OCS-203TA*



OSAKO

株式会社 尾谷製作所



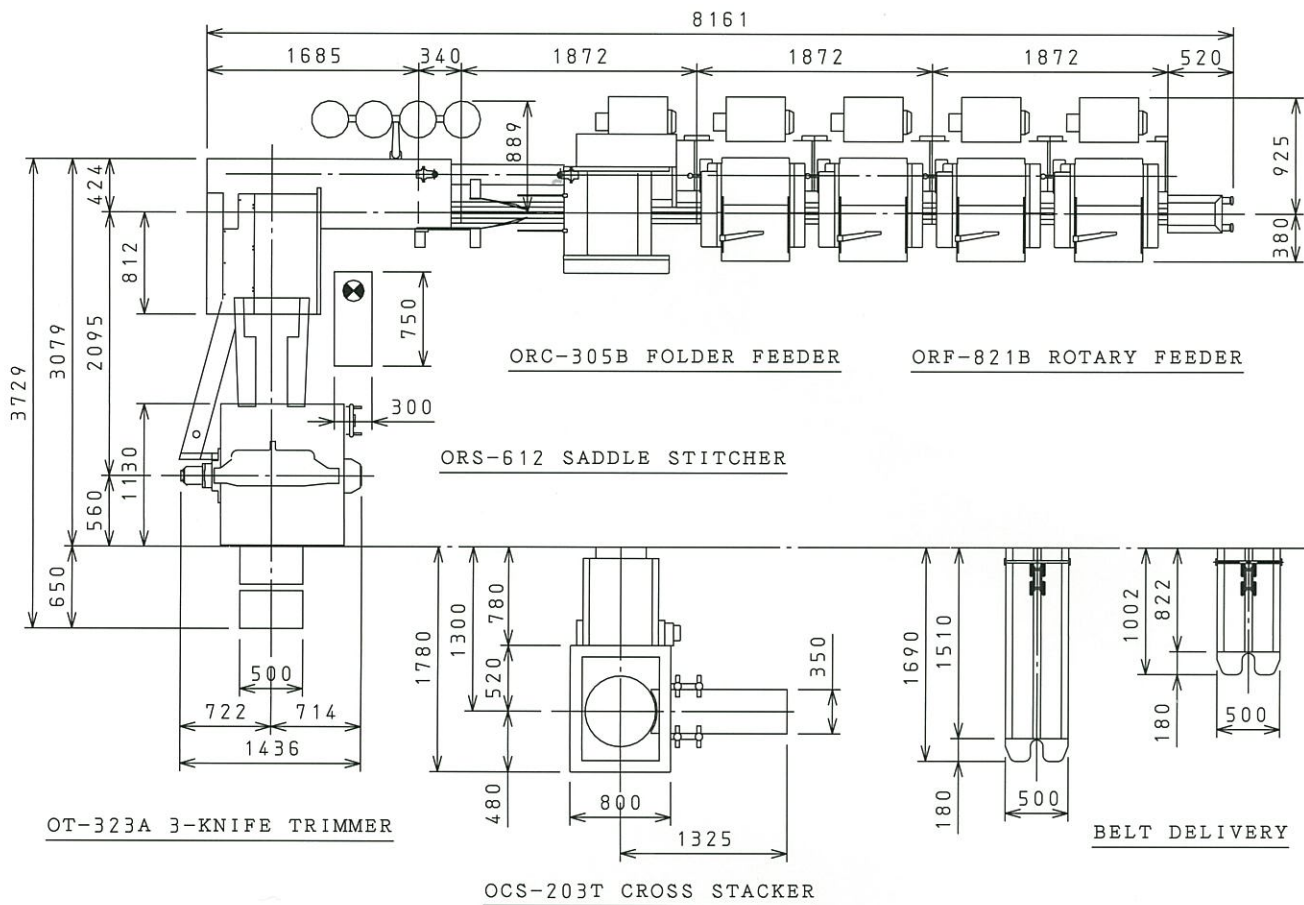
OSAKO, Specialist in manufacturing saddle stitchers has plenty of new and modern facility to produce the most advanced saddle stitchers.

Besides typical configuration you can select various units according to your requirement.

It is also possible to extend rotary feeders, folder feeder or cross-stacker later to increase productivity.

Model 368 is designed for safety and easy operation at high speed. Setup time is short. Feeder table is low for easy supply of signatures. Gears are rotating in the oil bath, rail for gathering chains are made of extra density polyethylene to against noise and friction to keep calm running for a long time.

DIMENSIONS



**SPECIFICATION**

- Mechanical Speed  
Max. ....12,000/ Hour
- Book Size : Hand-feed  
Max. ....375×400mm
- Book Size : Auto-feed  
Max. ....320×480mm  
Min. ....95×100mm
- Book Size : Trimmed  
Max. ....300×450mm  
Min. ....90×120mm  
Trim Thickness .....1~14mm
- Center Cut Device : Trimmed  
Max. ....300×450/2mm  
Min. ....105×257/2mm  
Max. Trim Thickness .....6mm  
Standard Cutting Gaps .....0,4,6mm

● Available Stitching Heads

	S80A	S80B	S50	S45	S80R
Max. Thickness	7mm	7mm	5mm	3mm	3mm
Stitch Crown Width	13mm	15mm	13mm	11mm	13mm
Min. Distance of Staples	80mm	80mm	58mm	48mm	80mm
Number of Stitching Position	1~4	1~4	1~6	1~8	1~4

\*S80R is a loop stitching Head.  
\*Standard model has 3 stitching heads.

**OSAKO & CO., LTD.**

● Head Office

1-20-26 Daito, Urawa-Ku, Saitama-Shi, Saitama 330-0043 Japan  
Phone: 048-886-7211 Fax: 048-886-8604

● Osaka Office

2-1-7 Doshin, Kita-Ku, Osaka-Shi, Osaka 530-0035  
Phone: 06-6351-9432

● Factory

208 Oh-Aza Natsumo, Takahata-Machi, Higashi Okitama, Yamagata 999-2172  
Phone: 0238-57-3160

