



PACKAGING

WORLD-CLASS EQUIPMENT

FOR OVER 45 YEARS

International Distributors | Service Technicians | Parts Inventory

**Hundreds of New & Used Machines
Available Online at BestGraphics.net**



LASERCK

OFFLINE BLANKING

OSAKA, JAPAN

Our Laserck Offline Blankers address the realities of increased wage rates, and the diminishing supply of skilled machine operators spanning North America currently.

Are your die cut run lengths too short to justify a Blanker? Do you have two, three or more temporary staff members manually stripping die cut pallets each shift? Let us help you automate the process; bypass long makereadies attributed with inline blanking; eliminate expensive tooling; reduce labor staffing; and improve your finishing turnaround times.

Patented
palletizing
technology



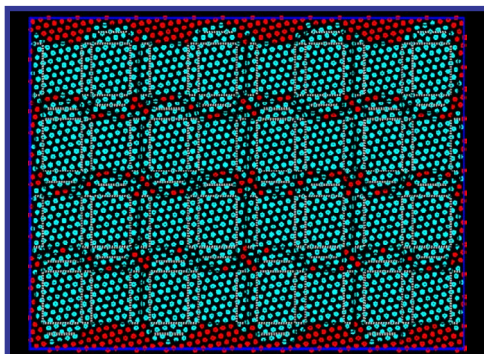
Master Blanker BLK

Cycle Speed	48 - 50 Seconds
Max. Lift	3.1"
Side Tail Spacing	10mm / 0.39"
Gripper Spacing	12mm / 0.47"
Pallets per Hour	5 to 7 / 7,500+ SPH
Makeready	15 Minutes

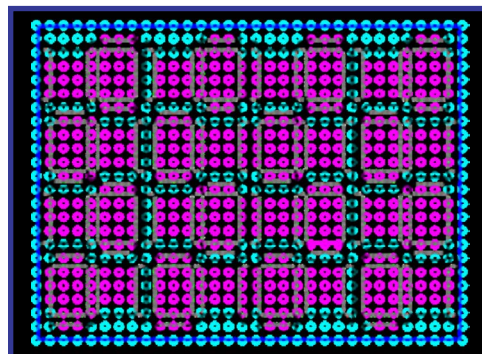
Utilizing our Mark IV software in Pre-press, cartons are laid out on a printed sheet in a way that allows a series of upper and lower pins to separate finished cartons (pushed up) from waste scrap (forced down).

Thereafter, finished cartons are delivered to the end of the BLK and are automatically palletized. The combination of just under 5,000 total pins allows your team to create nearly infinite templates, thus enabling you to place different designed cartons side-by-side on the same sheet. The (2) templates per job are made of paper board, and cost your team next to nothing.

**ENDLESS LAYOUTS. ZERO TOOLING COST.
QUICK CHANGEOVERS. FASTER THROUGHPUTS!**



Upper Pins



Lower Pins



LASERCH

OFFLINE BLANKING

UT

- Lifts Return to Operator
- Larger 10 mm (0.39") Pins
- 1.5 - 2 Pallets per Hour



CBL

- U-Shaped Design
- 6 - 8 Pallets per Hour



IMPRESSIVE RESULTS:

50% Reduction in expenses (1-shift)

64% Reduction in expenses (2-shift)

25% Increase in capacity

- Consistency in carton blanking quality
- Stabilize employee staffing (outsourcing)
- Predictability in daily carton blanking throughput
- Eliminate tooling costs and storage
- Physical Asset on balance sheet
- Depreciation of capital expenditure

Ask us about inexpensive, short run cavity punching



Best Graphics, Inc.

**W222 N600 Cheaney Drive
Waukesha, WI 53186**

Telephone +1 (262) 522-3330

Fax +1 (262) 522-3280

Toll-free +1 (800) 236-7603

E-mail Sales@BestGraphics.net

Hundreds of listings at BestGraphics.net

Product design and technical specifications subject to change without notice.

