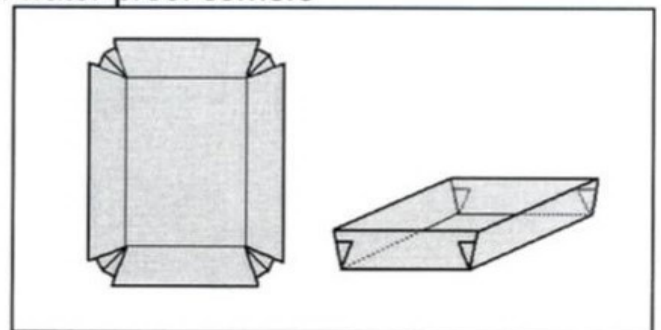
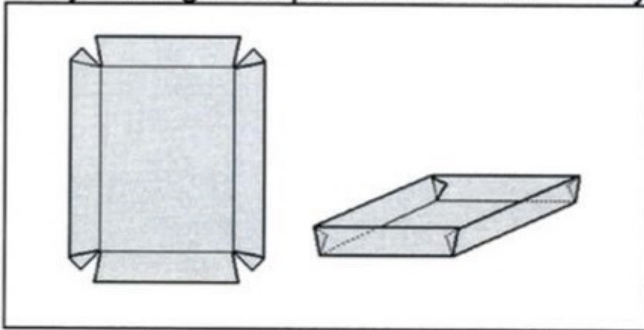
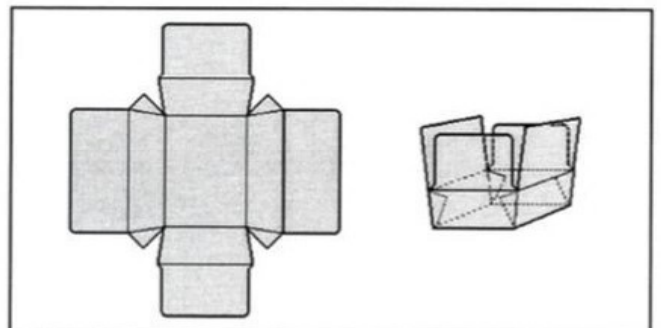
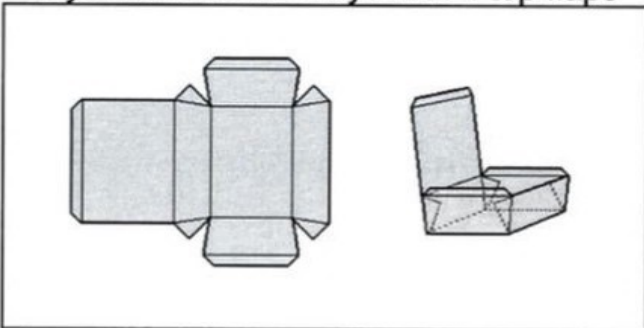


Basic machine for one lane production of

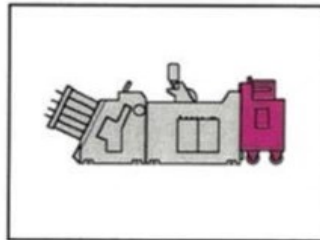
Trays with glue flaps inside/outside Trays with water-proof corners



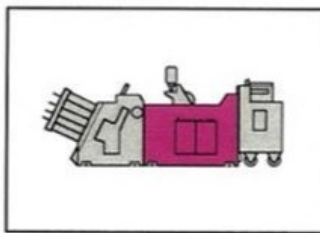
Trays with one lid Trays with 4 top flaps



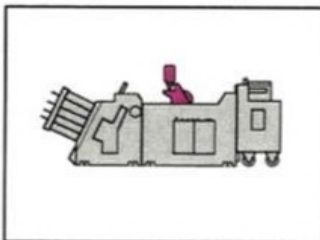
- ITEM 1 Timed belt feeder
- mobile
- single track



- ITEM 2 Chain section
- single track
- with drive

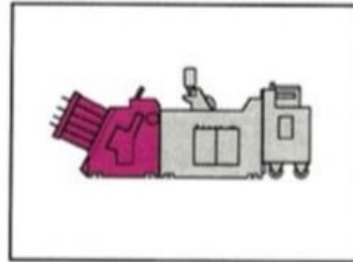


- ITEM 3 Stencil gluing station
with two stencil disks
working width 40 mm each

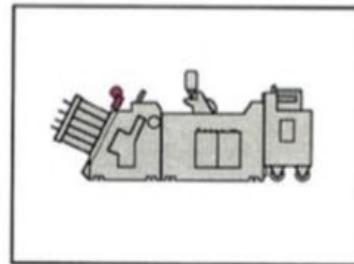


B. Delivery Scope and Price

- ITEM 4 Carton forming tower for tapered boxes
- single track

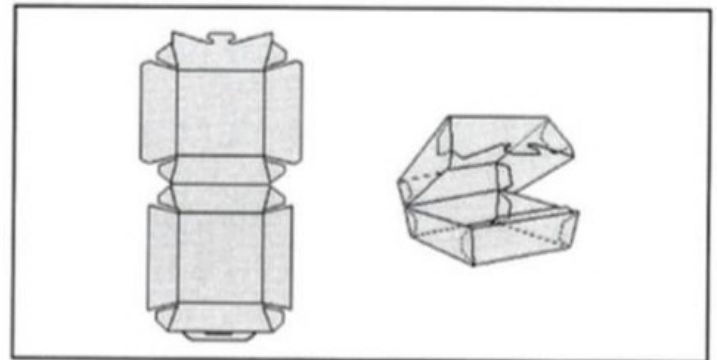


- ITEM 11 Electronic pre-selection counter with pin marking

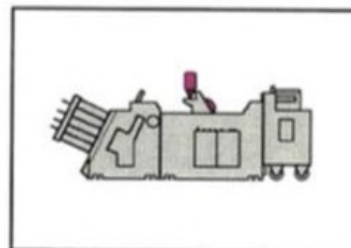


Additional equipment for production of:

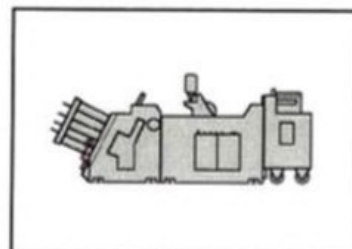
Clam shells with glue flaps inside or outside



- ITEM 14 Additional gluing unit
width 80 mm

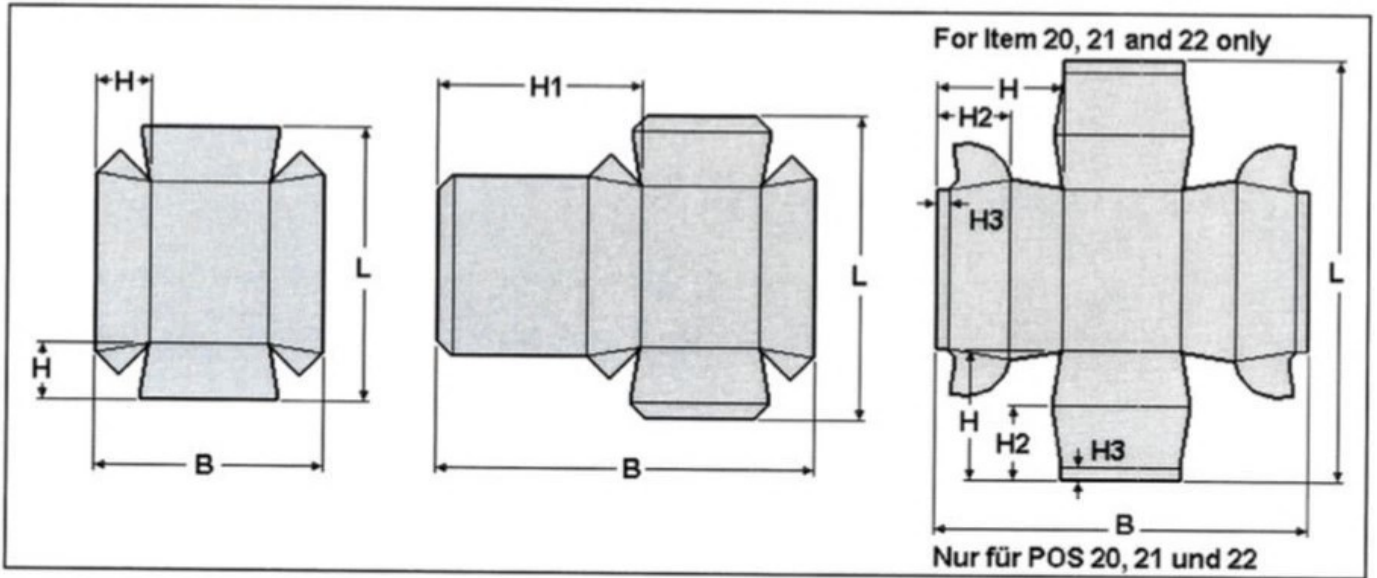


- ITEM 15 Pre-break roll for centre crease line
Including 2 folding swords



C. Technical Data

Format range basic machine CE 650-1



Blank length	L	100	mm	-	450	mm
Blank width	B	100	mm	-	650	mm
Height of side flaps	H	15	mm	-	200	mm
Height of side flap + lid	H1	50	mm	-	200	mm
Conicality (Angle between glued side flap and perpendicular to the bottom of the tray)		5	Degrees	-	40	Degrees
Carton weight		200	g/m ²	-	600	g/m ²
Corrugated board thickness				up to	1.5	mm

Nominal output of single track operation

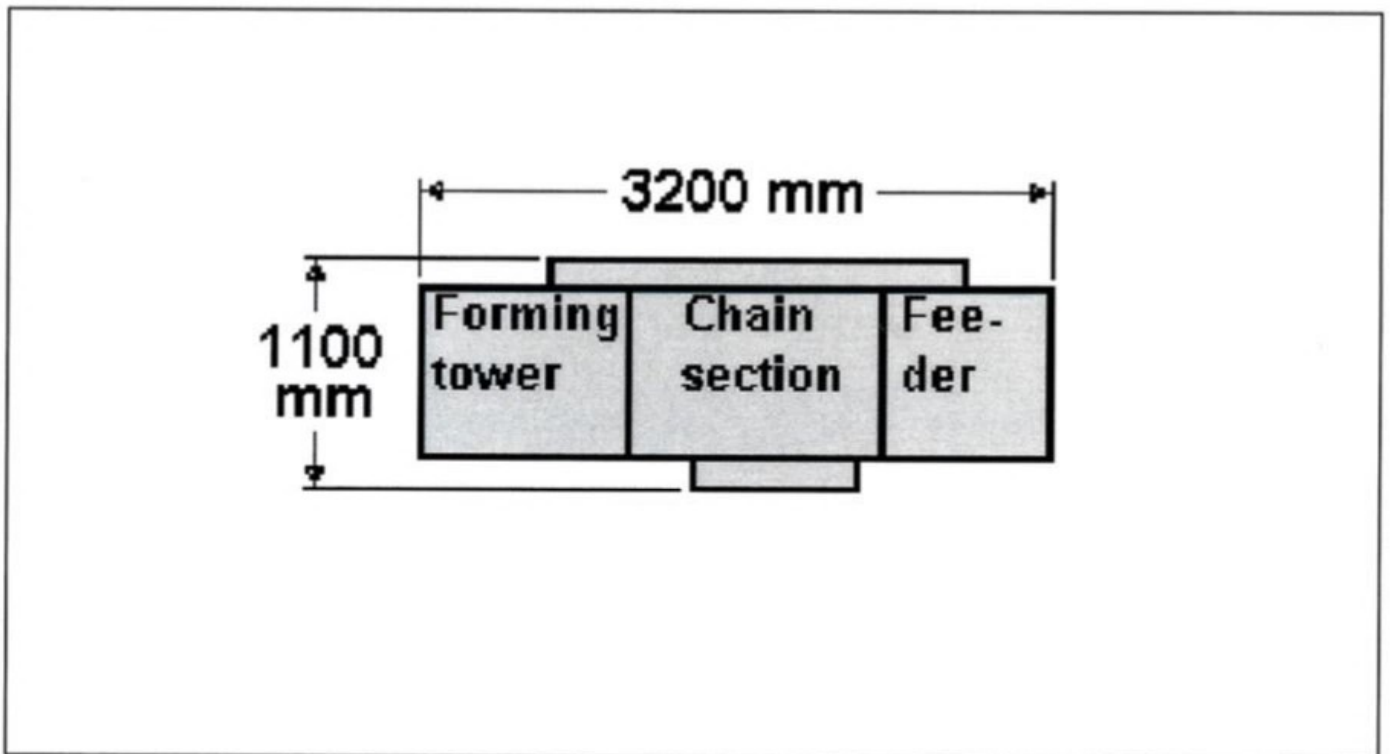
Simple trays	max. 12,000 pcs/h
Clam shells	max. 8,000 pcs/h

The technical data mentioned above are maximum indications. They are dependent upon type, quality of material, and its substance.

Maximum and/or minimum indications cannot be accommodated if they coincide in the same blank. When combined with additional equipment different data may apply.

Power supply: approx. 3.5 KW; Compressed air 6 bar, 50 NL/h
Supply of current and compressed air to be provided by the customer.

Space requirement:



Weights:

	Net weight		Gross weight	
CE 650-1 Basic machine	1,700	Kg	2,200	Kg