



PACKAGING

WORLD-CLASS EQUIPMENT

FOR OVER 45 YEARS

International Distributors | Service Technicians | Parts Inventory

**Hundreds of New & Used Machines
Available Online at BestGraphics.net**

BUSCH PILE TURNING

HAMBURG, GERMANY

3-year
warranty

Pneumatic alignment system

Process full skids
in under 5 minutes

Compact mobile,
self-leveling design

Integrated, optional
ionized air system

Single or double
blower motors

Standard pressure control
flaps on platforms

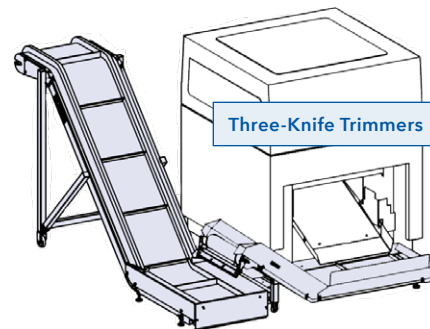
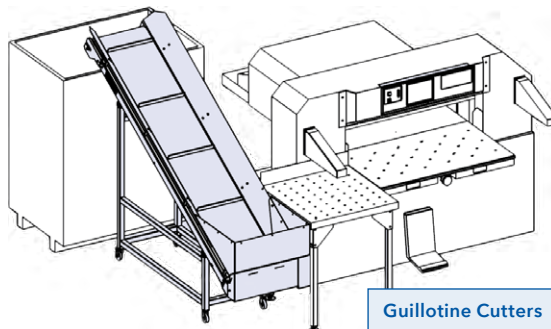
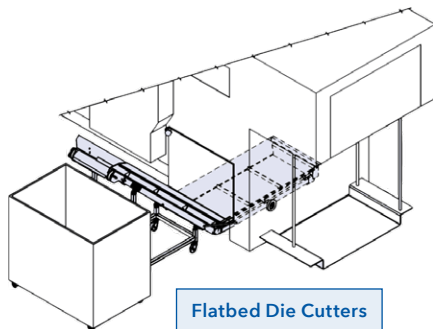
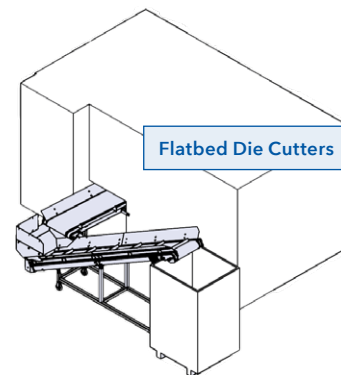
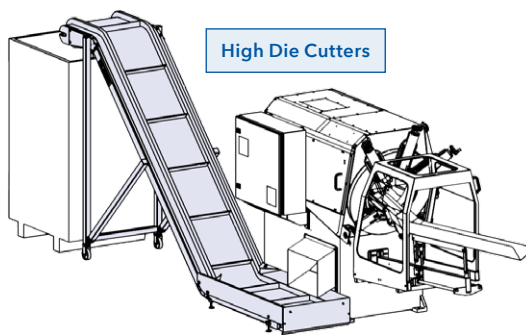
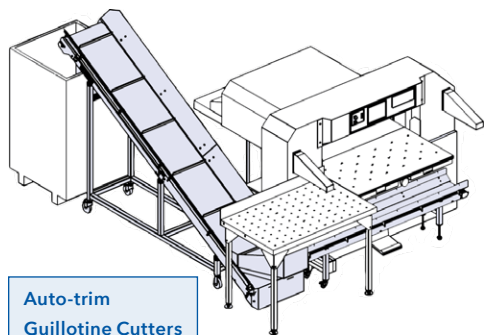
New! Programmable 2:1
"Tango" aeration process

Side-mount console
(left or right) controls air
& jog intensity on the fly

Model	Sheet Size
90	23.7" x 29.5"
125	31.5" x 47.2"
155	41.8" x 57.0"
180	48.0" x 65.0"

BUSCH **WASTE CONVEYANCE**

Busch Conveyors support Osako, Muller Martini, Horizon, Polar, Bobst and other major machine manufacturers.



Call for exact machine drawings

YoungShin

FLATBED DIE CUTTING

DAEGU, SOUTH KOREA

	1040S	106SR	145SR
Speed	7,500 SPH		6,000 SPH
Max. Sheet	29.13" x 40.94"	29.92" x 41.73"	40.15" x 57.00"
Min. Sheet	13.38" x 17.32"	13.38" x 15.75"	19.70" x 27.55"
Cutting Pressure	330 U.S. Tons		551 U.S. Tons
Weight	19 U.S. Tons	21 U.S. Tons	39 U.S. Tons

REVOTEC 106SR

With stripping and lead edge removal, color touch screen, nonstop feeder & delivery, dual push & pull guides



REVOTEC 145SR

With touchscreen, centerline quick order change, triple action stripping, side jogging & back jogging at delivery, high pile with sheet & batch counting



YoungShin

DIE CUTTING & BLANKING

UNIQUELY DESIGNED WITH DUAL DELIVERY

Our 106SB Die Cutter allows you to die cut & strip short run jobs by delivering finished sheets to the end of press, as well as die cut & blank long run jobs by delivering finished pallets of blanked cartons to the non-operator side of the machine.

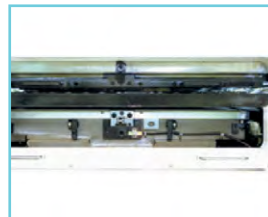
	REVOTEC 106SB	REVOTEC 145SB
Speed	7,500 SPH	6,000 SPH
Max. Sheet	29.13" x 40.94"	40.15" x 57.00"
Min. Sheet	13.38" x 17.32"	19.70" x 27.55"
Cutting Pressure	330 U.S. Tons	551 U.S. Tons
Weight	19 U.S. Tons	39 U.S. Tons



Centerline II Technology



Side Lay Guide



Die Cutting Section



Stripping Section



Male Blanking Tooling



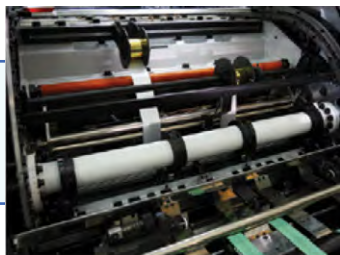
Palletizing Cartons

YoungShin

DIE CUTTING & FOIL STAMPING

Our 1040FS Die Cutter with Foil Stamping allows you to foil stamp and emboss printed sheets, or die cut and strip printed sheets.

Always struggled justifying the ROI on a dedicated stamper? Add additional die cutting capacity by “jumping” back and forth from stamping to die cutting and stripping work in about 10 - 15 minutes.



Foil Drive System feeds the foil in the same direction as the sheet, ultimately reducing foil waste

REVOTEC 1040FS	Die Cutter	Foil Stamper
Speed	6,600 SPH	5,000 SPH
Rewind	✓	—
Max. Sheet	29.13" x 40.94"	
Min. Sheet	13.38" x 17.32"	
Cutting Pressure	330 U.S. Tons	
Weight	22 U.S. Tons	

YoungShin

DIE CUTTING CORRUGATE

ZENITH up to 82.5"

Gripper Type

- Available with Pre-feeder and Makeready Table
- Flutes: E, B, A, AB



REVOTEC 145SR up to 57.0"

- Hybrid Machine for Folding Carton and Corrugate
- Flutes: E, B

Gripper Type



GIANT up to 98.4"

- (2) Cameras as Standard
- Optional EZ-Feeder
- Flutes: E, B, A, AB

Spike Infeed





LASERCK

OFFLINE BLANKING

OSAKA, JAPAN

Our Laserck Offline Blankers address the realities of increased wage rates, and the diminishing supply of skilled machine operators spanning North America currently.

Are your die cut run lengths too short to justify a Blanker? Do you have two, three or more temporary staff members manually stripping die cut pallets each shift? Let us help you automate the process; bypass long makereadies attributed with inline blanking; eliminate expensive tooling; reduce labor staffing; and improve your finishing turnaround times.

Patented
palletizing
technology



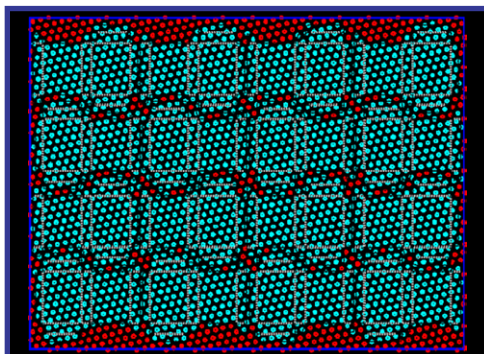
Master Blanker BLK

Cycle Speed	48 - 50 Seconds
Max. Lift	3.1"
Side Tail Spacing	10mm / 0.39"
Gripper Spacing	12mm / 0.47"
Pallets per Hour	5 to 7 / 7,500+ SPH
Makeready	15 Minutes

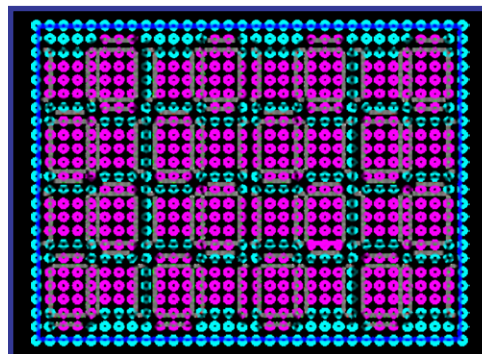
Utilizing our Mark IV software in Pre-press, cartons are laid out on a printed sheet in a way that allows a series of upper and lower pins to separate finished cartons (pushed up) from waste scrap (forced down).

Thereafter, finished cartons are delivered to the end of the BLK and are automatically palletized. The combination of just under 5,000 total pins allows your team to create nearly infinite templates, thus enabling you to place different designed cartons side-by-side on the same sheet. The (2) templates per job are made of paper board, and cost your team next to nothing.

**ENDLESS LAYOUTS. ZERO TOOLING COST.
QUICK CHANGEOVERS. FASTER THROUGHPUTS!**



Upper Pins



Lower Pins



LASERCH

OFFLINE BLANKING

UT

- Lifts Return to Operator
- Larger 10 mm (0.39") Pins
- 1.5 - 2 Pallets per Hour



CBL

- U-Shaped Design
- 6 - 8 Pallets per Hour



IMPRESSIVE RESULTS:

50% Reduction in expenses (1-shift)

64% Reduction in expenses (2-shift)

25% Increase in capacity

- Consistency in carton blanking quality
- Stabilize employee staffing (outsourcing)
- Predictability in daily carton blanking throughput
- Eliminate tooling costs and storage
- Physical Asset on balance sheet
- Depreciation of capital expenditure

Ask us about inexpensive, short run cavity punching



ROTARY DIE CUTTING

CALIFORNIA, USA

Each Insignia machine is produced completely in the USA and utilizes a register system similar to that of an offset press for superior sheet-to-sheet accuracy.

Able to run inline to many folding/gluing systems, the Insignia can become a production driven solution for both short and long run work. Capable of producing an extremely wide range of products; door hangers, presentation folders, unique direct mail pieces, folding cartons, hang tags, ID cards and so much more. The Insignia can help eliminate sending out profitable work and allow for more control over production and turnaround times. Let the Insignia die cutting system change the shape of your business!



	Insignia 5	Insignia 6	Insignia X3	Insignia 7
Max. Sheet Size	15" x 20"	20" x 20"	24" x 24"	24" x 30"
Min. Sheet Size	8" x 8"			
Speed	Variable up to 5,000 sheets per hour			
Max. Material Thickness	0.024" 400gsm		0.030" 550gsm*	0.030" 550gsm
Feed Capacity	~36"		~40"	

**Optional: Up to 30pt*



DIE CUTTING & FOIL STAMPING

TURIN, ITALY



Saroglia, a renowned Italian manufacturer of auto-feed Clamshell Die Cutters and Foil Stamping equipment, was acquired by APR Solutions. Redesigned with state-of-the-art mechanical, electrical, and safety upgrades—new generation Saroglia machines retain the original's simplicity of set-up, extreme mechanical strength, proven durability and reputation for producing very high quality die cut, embossed, and stamped product.

Originally constructed in 1911, the newly enhanced Saroglia FUB series now comes in a 23" x 30" format. These workhorse machines provide the widest range of stock thickness and tonnage capability in their class.

Applications:

- Book Covers
- Pocket Folders
- Folding Cartons
- Business Cards

FUB Die Cutter**FUB Gold Foil Stamper**

Max. Sheet Size	22.8" x 30.7" (58 x 78 cm)	
Min. Sheet Size	8.3" x 11.7" (21 x 29.7 cm)	
Feeding Pile Height	31.9" (81 cm)	
Cutting Pressure	121 tons (110,000 kg)	
Mechanical Speed	900 - 2,900 sheets per hour	
Net Weight	9,170 lbs. (4,160 kg)	9,370 lbs. (4,250 kg)
Workable Paper/Cardboard	80 - 1800 gsm	
Workable Corrugated Board	Up to 5 mm	
Foil Stamping Capability	—	✓
Foil Roll Size	N/A	5.31" (1" core)



All Saroglia models now feature a B-2 size, 23" x 30" sheet size with retractable automatic feeder for easy operator access and very quick makeready. Perfect for the growing digital market, or complementing your existing 40" die cutting equipment for specialty stamping, embossing and thicker paper board, corrugated and plastic substrates up to .20" (5mm) thick.

Available as dedicated a Die Cutter or as a Die Cutter with foil stamping. Saroglia features 2 draw servo-controlled transverse foil pull, servo-controlled dwell stamping, 4-zone heating system. APR has expanded the capability, enhanced the mechanical and electronic controls, remote connectivity, upgraded to new level safety standards and reduced the machine makeready.

Optional Equipment: Greeting Card/Book Jacket Feeder



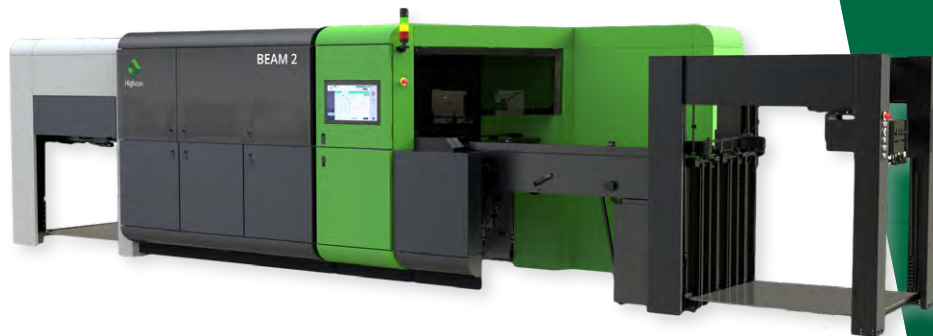
Highcon

LASER DIE CUTTING

FRANKFURT, GERMANY

BEAM 2

For folding carton and commercial applications at up to 5,000 b1 sheets/hour, the Highcon Beam 2 is a robust and profitable solution. Improves supply chain by eliminating tooling and streamlining setup. Wide substrate gamut - up to E-flute. Analog to digital conversion - also frees up analog equipment for very long runs.



Applications:

- > Medium Runs
- > Luxury Packaging
- > Beverage Packaging
- > Sleeves
- > Blister Cards
- > Greeting Cards
- > Brochures
- > Calendars
- > Invitations

Highcon, established in 2009 and headquartered one hour West of Jerusalem, Israel, develops and manufactures innovative Laser Die Cutting solutions. Their mission is to accelerate the adoption and usage of their digital finishing solutions to empower efficiency, innovation, effectiveness, and sustainability.



LASER DIE CUTTING CORRUGATE



BEAM 2C

The Highcon Beam 2C brings all the advantages of the flagship Beam 2 machine to the corrugated market for packaging and display. The Beam 2C is available in two versions - a pallet feed standard configuration and a field upgradeable non-stop feeding, stacking and waste removal configuration

Highcon machines provide a revolutionary approach by separating cutting and creasing processes, unlike the conventional die that combines both. This change is driven by the understanding that these processes have different needs. While creasing remains relatively stable, cutting often requires adjustments.

Highcon's separation of the activities enables folding carton and corrugated converters, printers, and trade finishers to meet their clients' demands for flexibility, creativity, and responsiveness. It encourages the development of new packaging and marketing concepts. Proofing becomes efficient, allowing fine-tuning of creative designs without wasting time, money, or materials.



- 1 Feeding system
- 2 Registration (mechanical)
- 3 DART station (creasing)
- 4 Advanced registration*
- 5 Laser system (cutting)
- 6 Digital stripping*
- 7 Stacking system

SCM

FOLDING GLUING

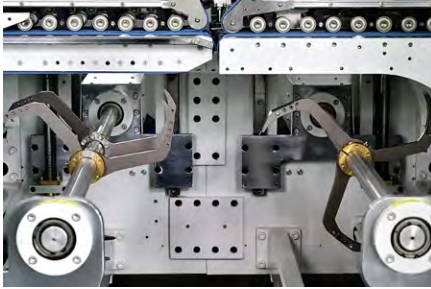
DONGGUANG, CHINA

SQ SERIES

Fully Automatic, "Smart" Model

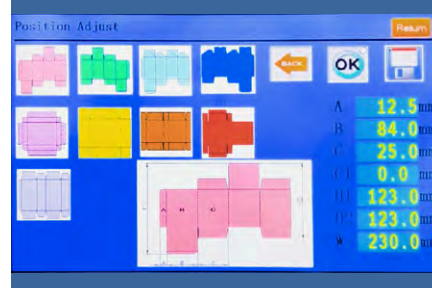


	SQ Series	WO Series	CA Series
Widths (cm)	85 110 125 145	65 75 85 105 125	45 65 70 80
Belt Speed (m/min.)	700	420	300
Carton Alignment	✓	✓	✓
Motorized Carriers	✓	Optional	—
Memory Recall	✓	Optional	Optional
Automatic Setup	✓	—	—



Backfold

- (2) Servo Motors
- For Height, (1) Speed
- (1) Set of Hooks
- Do Not Remove When Not in Use



Automatic Setup

- Offered by SQ Series
- 3 - 5 - 10 Minute Makereadies
- Auto Change Carriers, Guns, Backfold, & Feeder
- Carton Dimensions Controlled by Touchscreen

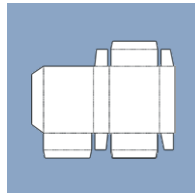


Inline Camera Inspection

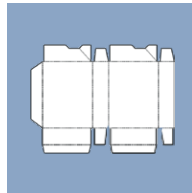
- Affordable
- Ensures 100% Quality Control
- Eliminates Offline Pauses
- Detects & Removes Reject Cartons

Other Options

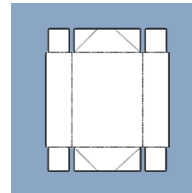
- Inline Windowing
- Inline Braille System
- Inline Tape Applicator
- Plasma Treatment System



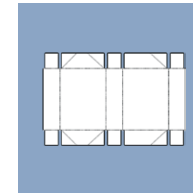
STRAIGHTLINE



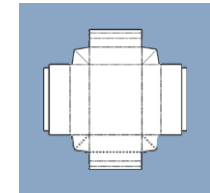
LOCKBOTTOM



4 CORNER



6 CORNER



DOUBLE WALL

SCM

FOLDING GLUING CORRUGATE

SCM SERIES

145 cm – 160 cm – 180 cm – 200 cm



HD SERIES

170 cm – 190 cm – 230 cm – 280 cm – 320 cm

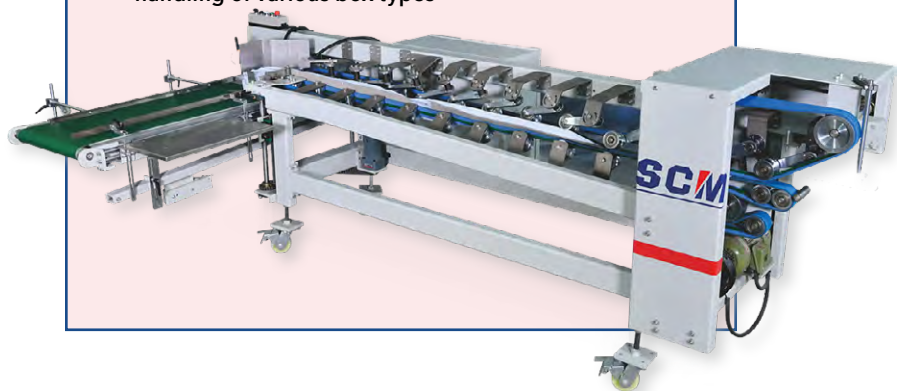


SCM

ANCILLARY EQUIPMENT

SO-2-500 COLLECTING TABLE

- Multipurpose tool designed to revolutionize box collection and simplify hand packing
- Compact and user-friendly design allows for effortless handling of various box types



PF SERIES PRE-FEEDER

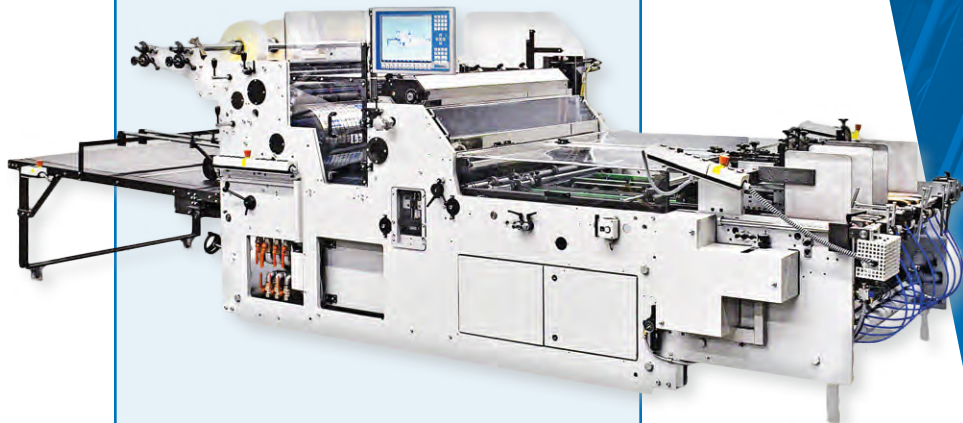


HS HEIBER + SCHRÖDER WINDOW PATCHING

EKRATH, GERMANY

WP MASTER

- › Single or Dual Lane Production
- › Up to 80,000 Pieces per Hour



Heiber + Schroeder is an over 35 year old specialty manufacturer located in Erkrath, Germany. With over 200 total installations in North America, H+S is known as a product innovator and a market leader in Window Patching equipment and fast becoming a dominant force in the Tray Forming industry.

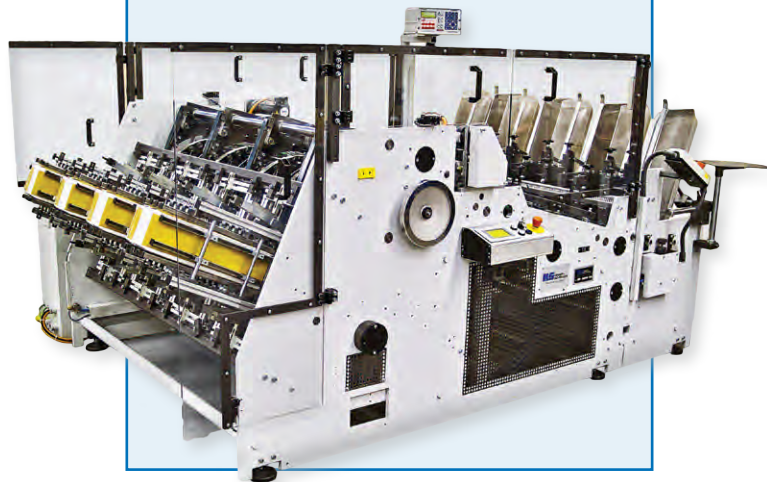


Automatic Stacker

HS HEIBER + SCHRÖDER TRAY FORMING

CE SERIES

- 1 to 4 Lane Production
- Up to 48,000 Pieces per Hour



Standard: Flex Towers | Optional: Fixed Towers





LITHO LABELING

FRANKFURT, GERMANY

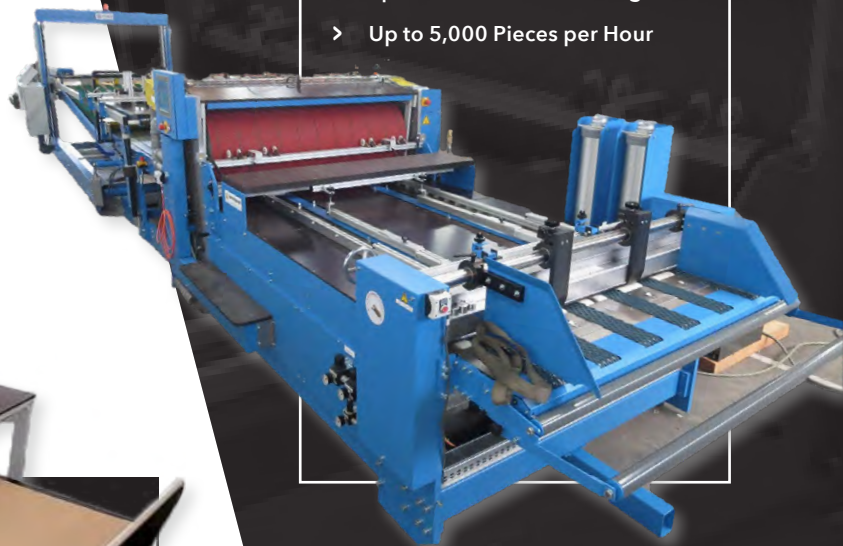
Since 1970, STOCK has been a leading producer of Sheet-to-Sheet Mounter and Labeling machines.

STOCK's product line ranges from 49" to 80" machine widths. Material thicknesses - for the carrier substrate - can range from 0.6 to 7mm with top sheets from 150 to 400 gsm (70# - 28pt). Upgrade options are available to support thicker top, and bottom materials.



LM

- > Spot or Full Sheet Labeling
- > 600 - 1,000 Pieces per Hour



LLM/HP

- > Spot or Full Sheet Labeling
- > Up to 5,000 Pieces per Hour



LITHO LAMINATING

'A' & 'S' Models

STOCK Litho Laminators are modular in design, and thus can be automated from the start, or scaled in the future. The model name is simply a construction of which modules are required. For example, a common machine offering is A-134R5/1500.

"A" refers to accuracy, as apposed to "S" which refers to speed. The "A" model has a maximum speed of 3,000 sheets per hour and has a 1/64" tolerance, while the "S" model has a maximum speed of 8,000 sheets per hour and has a 1/32" tolerance.

The "134R5" refers to the modules that the unit consists of. In this case "1" is the laminator, "3" is the take-off table, "4R" refers to the substrate sheet feeder, and "5" refers to the pressure belt.

Available modules shown to the right.

Lastly, the "1500" is the working width in millimeters, 59.1" in this case. Other available options are: 1250 (49.2"), 1650 (65.0"), and 2050 (80.7")

	'A' Model	'S' Model
Run Lengths	100 – 10,000	500 – 100,000
Registration	1/64"	1/32"
Mounter Widths	49.2" 59.1" 65.0" 80.7"	
Max. Sheet Length	82.5"	
Setup Time	5 minutes	
Max. Speed	3,000 sph	8,000 sph



AR-134R5/1500

- | | |
|----------------------------------|--------------------------------|
| 1 Laminator | 5 Pressure Belt |
| 2 Feeding Table (manual) | 6 Printed Sheet Feeder |
| 3 Take-off Table (manual) | 7 Non-stop Down Stacker |
| 4R Substrate Sheet Feeder | 8 Batch Pile Turner |

ecosystem

FILM LAMINATION

ROVERETO, ITALY

Aqua 106

Thermal- and Water-based | High volume Sheet-to-sheet, Roll-to-roll, or Roll-to sheet manufacturing of book covers, and other printed material.

Quick Series

Thermal-based | Short run commercial work with automatic feeder, touch screen control, and manual delivery.

Compact 76

Thermal-based | Mid to high volume Book Covers, Pocket Folders, Cartons and Offset printed material.

Best 76

Thermal-based | Medium volume projects that require hot knife for unique materials.



	Aqua 106	Quick 106	Compact 76	Best 76	Quick 76	Quick 54
Max. Sheet Size	41.73" x 55.91"			29.92" x 41.73"		21.26" x 29.92"
Min. Sheet Size	9.84" x 10.63"	8.26" x 9.84"		7.87" x 9.84"	7.87" x 7.87"	
Speed (feet/min)	295	262	196	164		131
Heating Type	Water			Oil		
Hot Knife	✓	✓	✓	✓	—	—
Downstacker	✓	✓	✓	✓	Optional	—
Sleeking	—	Optional	Optional	—	Optional	—



Ask us about Roll-to-Roll or
Roll-to-Sheet solutions.

ecosystem **DIGITAL U.V. COATING**

JetCoater 35 JetCoater 76

Max. Sheet Size	13.78" x 29.92"	29.92" x 41.73"
Min. Sheet Size	7.87" x 8.27"	7.87" x 9.84"
Speed (feet/min)	148	197

In addition to their Thermal- and Water-based Film Laminators, Ecosystem has grown with the evolution of the printing industry which has led them to develop a series of very flexible Digital U.V. Coaters for embellishing – with solutions and technical features that set them apart from the competition.



Kompac® U.V. COATING

NEW JERSEY, USA

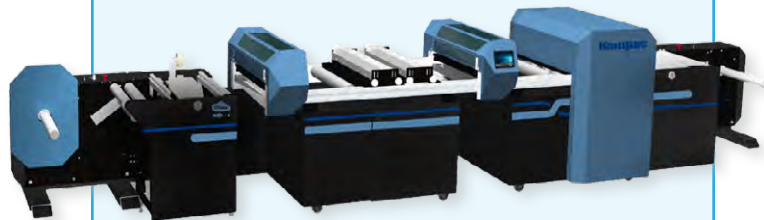
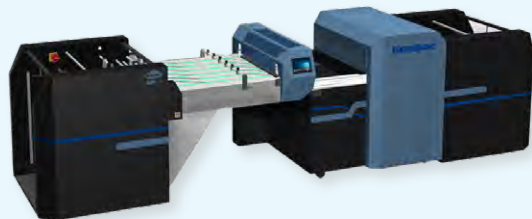
ONYX 30 | Spot & Flood



- > 22.0" x 31.50" Dual Spot & Flood Ultraviolet Aqueous Coater
- > 2-minute coating changeovers, and clean up
- > Optional: Anilox system for soft touch materials, IR Dryer to Sapphire coat your own HP Indigo stock

PHOENIX SERIES | Flood

- > Flood Coaters with modular design configurable to sheet, web, inline or near line.
- > Available in 20" and 30" formats
- > Multiple coating systems. Up to 2 coating units per system anilox or standard.



TAPE APPLICATING

ROVERETO, ITALY

MINI ATHOS

- Manual Feeder
- Max. Size Format: 19.6" x 19.6"



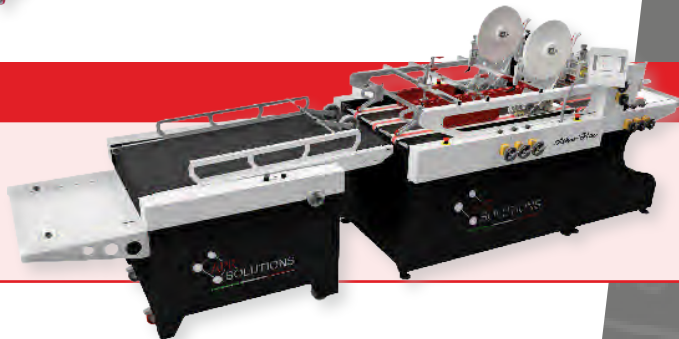
ATHOS

- Manual Feeder
- Max. Size Format: 31.5" x 39.4"



ATHOS PLUS

- Manual or Automatic Feeder
- Max. Size Format: 27.6" x 39.4"



TAPE APPLICATING CORRUGATE



MAXI ATHOS

- Manual Feeder or Automatic Feeder
- Max. Size Format: 63.0" x 63.0" or 86.6" x 86.6"



ITOTEC GUILLOTINE CUTTING

NAGOYA, JAPAN

SC CUTTER SERIES

5-year

warranty

32" – 40" – 45" – 54" – 63"



Itotec will soon be celebrating their 105th year in manufacturing. With over 12,000 installs world wide, customer's choose Itotec for their:

- Dual Arm Cut-and-Clamp Cutting Process
- Longer Knife Shear Stroke
- Chrome Plated Main and Side Tables
- Consistent, Lineal Guided Backgauge System
- All Knife Adjustments from Front of Cutter

Key Features:

- 1 Ton More Than Competitors
- 2 Chrome Plated Air Tables
- 2 High Speed Steel Knives
- 4 Ways to Program Jobs
- 5 Year Machine Warranty





ITOTEC

GUILLOTINE CUTTING

TECHNICAL DATA

	SC-82Z	SC-100Z	SC-115Z	SC-137Z
Cutting Width	32.28"	40.55"	45.98"	53.94"
Cutting Depth	32.28"	39.37"	45.67"	51.97"
Weight	5,500 lbs.	8,100 lbs.	9,000 lbs.	9,900 lbs.
Maximum Lift	5.12"	6.50"		
Minimum Cut	1.06"			
Knife Strokes per Min.	46	50		
Cut Memory	25,000			
Electrical	220V, 3-Phase, 30 Amp			220V, 3-Phase, 40 Amp
Dimensions (L x W x H)	6.9' x 6.5' x 5.1'	8.7' x 8.0' x 5.4'	9.1' x 8.5' x 5.4'	9.8' x 9.0' x 5.4'

Ask us about 63" - 98" size formats!



LARGE FORMAT CUTTING

TAICHUNG CITY, TAIWAN

10.4" Touch Screen



LG CUTTER SERIES

70" – 86" – 102"

118" – 126" – 141"



Longer (manufactured in Taiwan, since 1975) is a high-quality, globally known manufacturer of large-format paper cutters in format sizes up to 141".

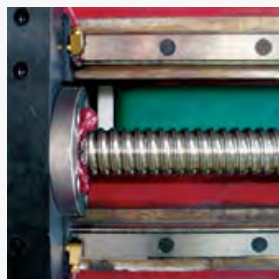
With nearly 2,000 installations worldwide, Longer incorporates super-duty, dual gear box driven, double-arm cut/clamp technology – assuring years of trouble free operation and precise large format cutting regardless of substrate. Longer Cutters are found in some of the most demanding cutting environments within the commercial print, POP/display, and paper/plastic converting industries.

Key Features:

- Dual-arm cut/clamp
- Heavy-duty steel and iron castings
- Electromagnetic hand wheel
- Dual-knife worm gear drive
- 10.4" touchscreen display
- Safety beams
- Separate main cut/clamp drive motors
- Dual, high-precision, linear backgauge rails
- Recirculating ball screw backgauge drive
- CE-rated design

TECHNICAL DATA

	LG-1800CD	LG-2200CD	LG-2600CD	LG-3000CD	LG-3200CD	LG-3600CD
Cutting Length	70.86"	86.61"	102.36"	118.11"	125.98"	141.73"
Cutting Thickness	6.49"	5.91"				
Table Length	33.46"					
Table Height	35.43"					
Weight	~13,200 lbs.	~16,800 lbs.	~19,000 lbs.	~23,800 lbs.	~25,800 lbs.	~30,400 lbs.
Dimensions (L x W)	10.7' x 11.5'	12.0' x 12.8'	13.3' x 14.1'	14.6' x 15.4'	15.3' x 16.1'	16.6' x 17.4'



Ball bearing screw
& double linear rails
for high precision



Electromagnetic
clutch & brake

Device for safety &
easy blade adjustment



HIGH-QUALITY, SECOND-HAND

PRE-OWNED MACHINES

Interested in selling? Give us a call! 1 (800) 236-7603

The logo for Bobst, featuring a red square icon to the left of the word "BOBST" in bold, black, sans-serif capital letters.

Die Cutters, Blankers,
Stampers, & Folder Gluers

The logo for Moll, with the text "FOLD • GLUE • DIECUT • TAPE • TIP-ON" in small red letters above the word "MOLL" in large, bold, red, sans-serif capital letters. Below "MOLL" is a red icon of a pair of scissors and the text "B&R MOLL" in smaller red letters.

Marathons, Regals, Versa
Folds, & Final Folds

The logo for Iberica AG, featuring the word "IBERICA" in blue, sans-serif capital letters, followed by "AG" in a smaller, blue, sans-serif font.

Die Cutters & Blankers

The logo for Brausse Group, featuring a stylized graphic of a building or mountain in black and orange to the left of the word "BRAUSSE" in large, black, sans-serif capital letters, with "GROUP" in smaller, black, sans-serif capital letters below it.

Die Cutters, Blankers,
& Foil Stampers

The logo for Kluge, featuring the word "KLUGE" in yellow, sans-serif capital letters inside a blue shield-like shape with a yellow border.

Folder Gluers & Die Cutters

The logo for Lamina System, featuring a stylized graphic of a globe or sphere in blue and yellow above the word "lamina" in blue, sans-serif lowercase letters, with "SYSTEM" in smaller, blue, sans-serif capital letters below it.

Sheet-to-Sheet
Moulder Laminators

The logo for Autobond, featuring the word "AUTOBOND" in white, sans-serif capital letters inside a black rectangular box.

Film Laminators

The logo for Kama, featuring a large, black, sans-serif capital letter "K" inside a circle, with the word "KAMA" in smaller, black, sans-serif capital letters below it.

Digital Die Cutters

The logo for PMC, featuring the letters "PMC" in yellow, sans-serif capital letters inside a blue oval shape with a yellow border.

High Die Cutters

The logo for Heidelberg, featuring a stylized graphic of a globe or sphere in blue and yellow to the left of the word "HEIDELBERG" in blue, sans-serif capital letters.

Die Cutters & Folder Gluers

The logo for Polar Mohr, featuring a stylized graphic of a globe or sphere in red and black above the word "POLAR" in large, black, sans-serif capital letters, with "MOHR" in smaller, black, sans-serif capital letters below it.

Cutters, Joggers, & Unloaders

The logo for Kohmann, featuring the word "kohmann" in a black, sans-serif font, with the letters "k" and "h" in lowercase and the others in uppercase, enclosed in a thin black rectangular border.

Window Patchers

KEEPING YOU UP-AND-RUNNING

PARTS & SERVICE

MILWAUKEE, WISCONSIN

Parts Department

Best Graphics maintains nearly \$750,000 USD in parts on the shelves at our Milwaukee, WI facilities. Parts are actively monitored via our inventory software system.

On-hand parts can drop ship for next-day arrival if ordered before 4pm CST. Hard to find parts, belts, gears and electronics will drop ship directly from our manufacturer partners to help get you up-and-running as quickly as possible.

Need key components for your Bindery, Finishing, or Packaging equipment that's out of warranty? **Call us today!**

CONTACT OUR PARTS DEPARTMENT

Telephone: +1 (262) 522-3330 ext. 1010
Toll-free: +1 (800) 236-7603 ext. 1010
E-mail: Parts@BestGraphics.net



CONTACT OUR SERVICE DEPARTMENT

Telephone: +1 (262) 522-3330 ext. 1009
Toll-free: +1 (800) 236-7603 ext. 1009
E-mail: Service@BestGraphics.net

Service Scheduling

Best Graphics staff a full team of Service Technicians to help support the 200-225 machine sales and installations we complete annually.

Need help troubleshooting an out-of-warranty machine? Want a refresher on how to run that tricky, 2-up booklet? Can't remember how to do a knife change on your recently purchased Guillotine Cutter? **Call us today.** Over-the-phone support is free-of-charge, while onsite service is billed out on hourly, or daily rates.



Best Graphics, Inc.

**W222 N600 Cheaney Drive
Waukesha, WI 53186**

Telephone +1 (262) 522-3330

Fax +1 (262) 522-3280

Toll-free +1 (800) 236-7603

E-mail Sales@BestGraphics.net

Hundreds of listings at BestGraphics.net

Product design and technical specifications subject to change without notice.

