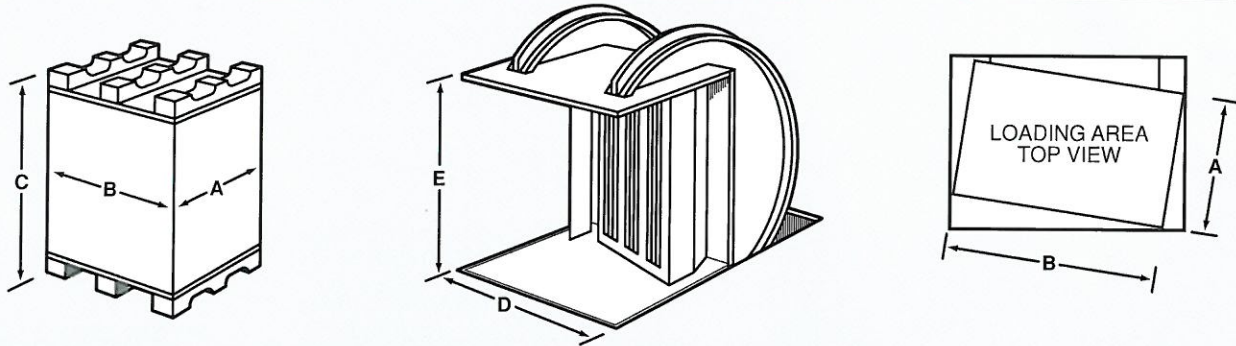
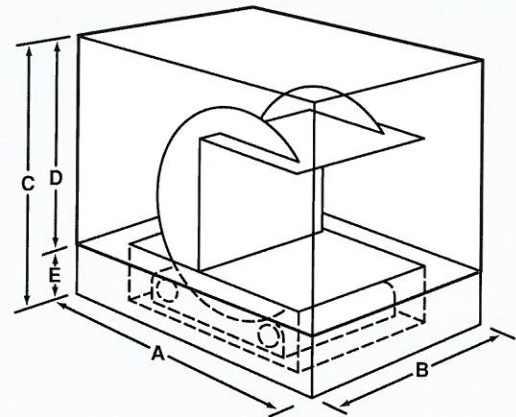
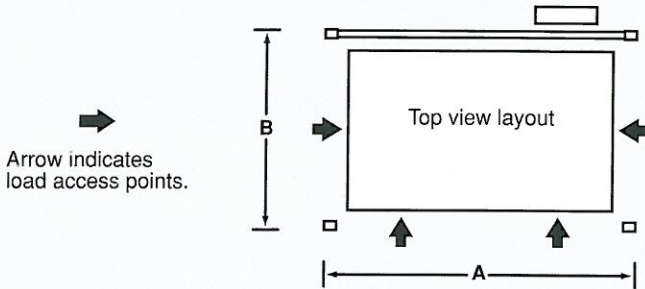


Specifications

MODEL	LOAD SPECIFICATIONS			MACHINE SPECIFICATIONS				
	MAXIMUM FORMAT		MAXIMUM PILE HEIGHT INCLUDING PALLET C	CAPACITY	WIDTH OF OPENING D	HEIGHT OF OPENING E	MACHINE WEIGHT	RUNNING POWER REQUIREMENTS 460 VOLT, 60 HZ (380 Volts, 50 Hz)
	A	B						
6500	28" x 40" (710 x 1020mm)		58" (1470mm)	1750 lbs (800 kg)	60" (1520mm)	65" (1650mm)	5980 lbs (2700 kg)	15 amps (8.5 kw)
7300	43" x 65" (1090 x 1650mm)		67" (1700mm)	4500 lbs (2040 kg)	78.75" (2000mm)	73" (1850mm)	9400 lbs (4260 kg)	30 amps (25 kw)



Machine space requirements and recommended* minimum clearance from stationary objects.



*These measurements represent minimum operational clearances from building support columns, overhead trusses, beams and utilities. Additional space adequate for loading/unloading, electrical cabinet and operator convenience must be allowed. The product, product flow and pallet handling equipment in each plant affect additional space requirements for loading/unloading in your plant. **NOTE:** While these specifications may be used for general site planning, they **SHOULD NOT** be used for site preparation. Detailed prints will be provided for site preparation. All specifications are subject to change without notice.

MODEL	A	B	C	D	E
6500	98.5" (2500mm)	89" (2260mm)	90" (2290mm)	73" (1850mm)	16.5" (420mm)
7300	134.5" (3420mm)	109.5" (2780mm)	106" (2690mm)	87" (2210mm)	19" (480mm)

For a real opportunity to increase productivity, call Automatän today.

Automatän