

[ After looking at all of the logical options,  
Brausse Group was the clear choice when  
comparing price and performance. Today,  
that value continues to stand the test of time ]



proud to be canadian

Brausse Group is the worlds leading equipment manufacturer for the converting industry, with manufacturing bases worldwide. We have been supplying converting equipment to many different industries for over 30 years. The globalization of our manufacturing process enables us to maintian the highest level of product quality and innovation, at the best economical value.

Many of our facilities are either ISO9001:2000, CE and /CSA certified for their first class workmanship. We have teams of highly trained service professionals ready to serve your because we believe that service is "the name of the game" in your daily operation.



Manufacturing facility in Shanghai, China

Brausse Group - Operations Headquarters  
#1 1500 Valmont Way  
Richmond, BC Canada V6V 1Y4  
T. 604.278.2027

1.888.853.4760 | 1.888.272.8773

[ ...through their help and support, Brausse Group  
has made life alot easier for me ]

[www.brausse.com](http://www.brausse.com)



# TA Series

## Folding & Gluing Machine



[ Your trusted converting  
partner for over 30 years ]

proud to be canadian

[www.brausse.com](http://www.brausse.com)

## TA Series

Folding & Gluing Machine for Folding Carton



**Standard Models:**  
TA650 - C3 | TA650 - C6  
TA900 - C3 | TA900 - C6  
TA 1100 - C3 | TA 1100 - C6

## Outstanding Features



Individually adjustable feed belts with vibrator to ensure stable and smooth feeding (suction feed optional)



Touch Screen main control panel, user - friendly



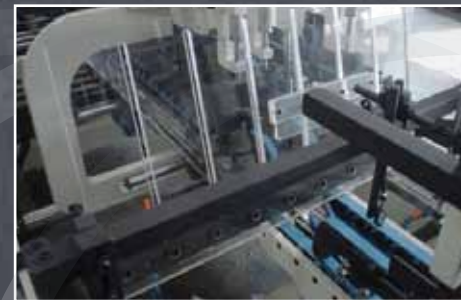
Servomotor controlled back folding system for 4/6-corner boxes (optional)



Standard 2 lower glue pots for versatile combination of gluing options

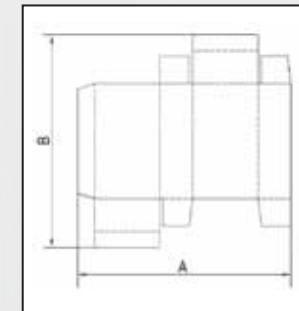


Heavy duty trombone section to ensure stable transfer of products to compressing conveyor



Pocket Folder Device (optional)

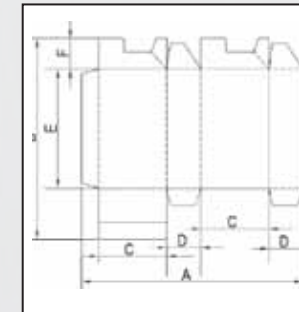
## Technical Specifications



Straightline Cartons

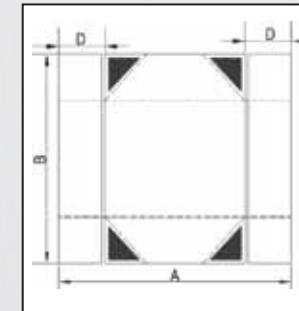
	TA 650	TA 900	TA 1100
A mm(in)	100-700 (3.9-27.5) 78-700 (3-27.5)**	120-900 (4.7-35.4) 80-900 (3.1-35.4)**	120-1100 (4.7-43.3) 80-1100 (3.1-43.3)**
B mm(in)	55-800 (2.2-31.5)	55-900 (2.2-35.4)	55-1100 (2.2-43.3)

\*\* with small box fold device



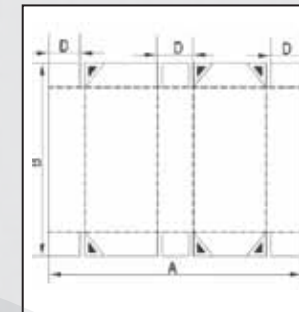
Lockbottom Cartons

	TA 650	TA 900	TA 1100
A mm(in)	150-675 (5.9-26.6)	160-875 (6.3-34.4)	160-1075 (6.3-42.3)
B mm(in)	120-800 (4.7-31.5)	150-900 (5.9-35.4)	150-900 (5.9-35.4)
C min. mm(in)	40 (1.57)	47 (1.85)	47 (1.85)
D min. mm(in)	30 (1.2)	30 (1.2)	30 (1.2)
E min. mm(in)	65 (2.56)	65 (2.56)	65 (2.56)
F min. mm(in)	28 (1.1)	28 (1.1)	28 (1.1)



4-Corner Collapsible Boxes

	TA 650	TA 900	TA 1100
A mm(in)	160-600 (6.3-23.6)	175-850 (6.9-33.5)	175-1050 (6.9-41.3)
B mm(in)	160-700 (6.3-27.5)	160-700 (6.3-27.5)	160-700 (6.3-27.5)
C mm(in)	30-100 (1.2-3.9)	30-150 (1.2-5.9)	30-150 (1.2-5.9)



6-Corner Collapsible Boxes

	TA 650	TA 900	TA 1100
A mm(in)	280-600 (11.0-23.6)	300-850(11.8-33.5)	300-1050 (11.8-41.3)
B mm(in)	160-700 (6.3-27.5)	160-700(6.3-27.5)	160-700 (6.3-27.5)
C mm(in)	30-100(1.2-3.9)	30-150(1.2-5.9)	30-150 (1.2-5.9)

Stock Range

Solid board, up to 800g/m<sup>2</sup>. Corrugated up to E-Flute

Fundamental Pattern

Straight Line, Double Wall, Crash-Lock Bottom, 4/6-Corner

Max. Belt Speed

425m/min.

Main Motor

15/22KW

Overall Length

12140/12740

Total Weight

7000-8500KG

In the interest of product improvement, the manufacturer reserves the right to change specifications and features without notice.