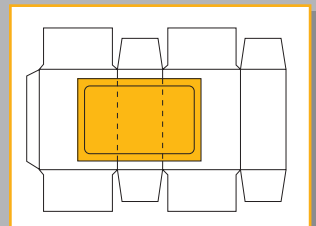
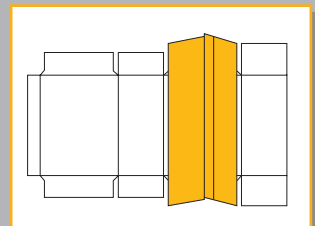


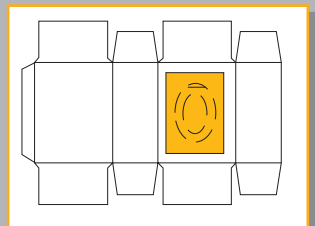
Normal window



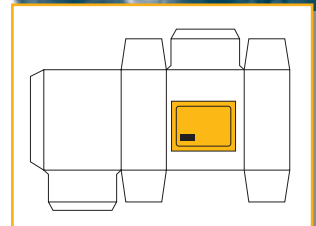
Continuous or crease perforation



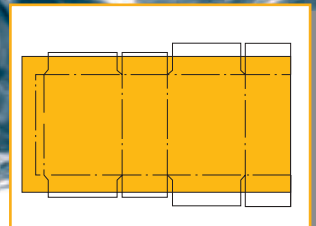
sealed inner tube



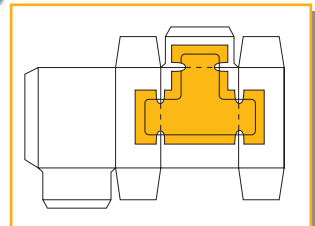
Profile Knife Unit (Tissue box)



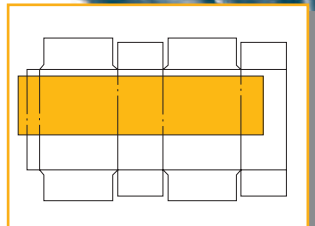
Pre-printed foil



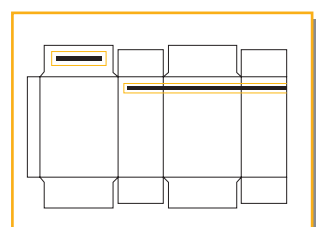
Lining material



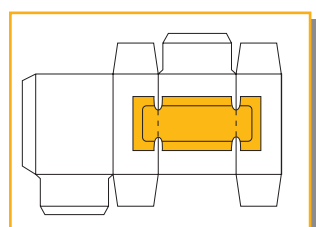
Score with cut-out



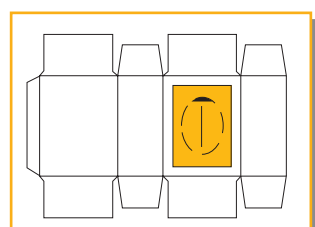
Inner partition placement



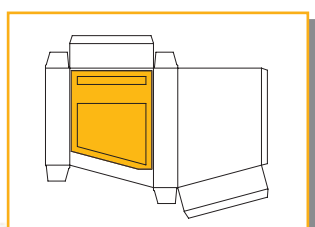
Carrier handle and/or tear strip



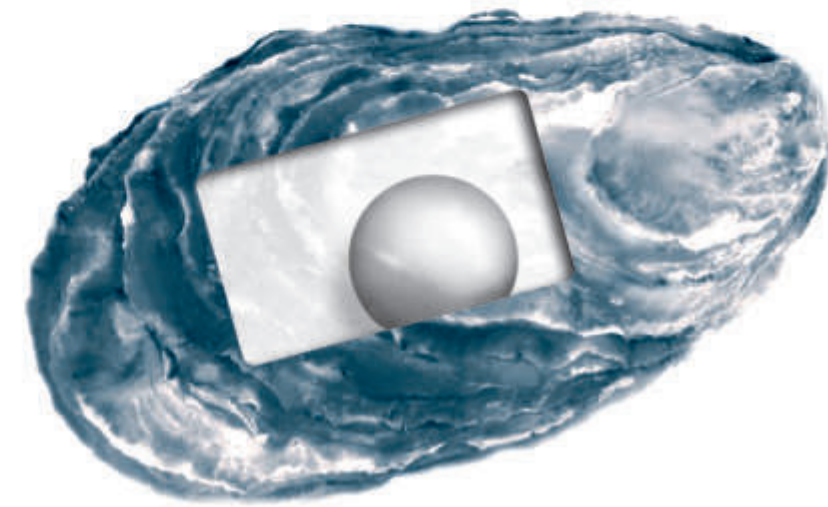
Scoring with punch-out coming from the reel or as a blank (Panoramic window)



Continuous or intermittent length slitting perforation (Tissue box)



Oblique window



► Our Product Range:

- Window patching machines for carton blanks
- Pick & Place window patching machines
- Print inspection machines for carton blanks
- Film sealing machines for Gable Top cartons
- Folding box gluing machines
- Automatic stacking systems for
  - window patchers
  - narrow web flexo printing machines
- Compact disc sleeve machines
- CD/DVD tray placing machines
- Machines for special applications (on request)

Kohmann GmbH & Co. KG  
Maschinenbau



► P.O. Box 10 06 55  
40806 Mettmann  
Germany  
  
Benninghofer Weg 7  
40822 Mettmann  
Germany  
  
T +49-21 04-9146 0  
F +49-21 04-9146 50  
sales@kohmann.de  
www.kohmann.de

- F-1100 Universal
- F-1400 Universal  
Window Patching Machine  
for Cardboard Packaging

► Always a clear view

