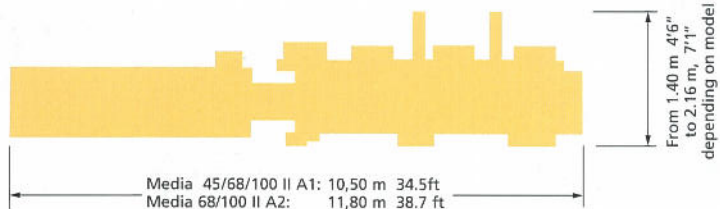


General specifications

	Media 45 II	Media 68 II	Media 100 II
Materials handled			
Solid board		100 - 600 g/m ²	
Corrugated board		N, F and E minifluting	
Maximum thickness of folded box		8 mm 5/16"	
Sizes (blanks open)			
Maximum width	48 cm 18-7/8"	68 cm 26-3/4"	100 cm 39-3/8"
Maximum width without pre-breaking 3rd crease	48 cm 18-7/8"	73.5 cm 28-7/8"	100 cm 39-3/8"
Minimum width, standard equipment		12.6 cm 5"	
Minimum width with folder for « mini-size boxes »		5.6 cm 2-3/16"	
Maximum length	50 cm 19-5/8"	60 cm 23-5/8"	60 cm 23-5/8"
Minimum length		6 cm 2-3/8"	
Delivery station			
Approx. length of pressure belts		290 cm 9'5"	
Width of aprons	55 cm 21-5/8"	55 cm 21-5/8"	90 cm 35-3/8"
Maximum height of stream		15 cm 5-7/8"	
Drive			
Inching rate		20 m/min. (65 ft/min)	
Continuous run up to		300 m/min. (985 ft/min)	
3-phase shunt commutator motor		11 kW (15 HP)	
Connected load		19 kVA - 42 kVA, depending on accessories	
Space requirement			
Length and width		See illustration	
Approx. weight	4000 kg A1 (8,800 lbs)	4200 kg A1 (9,240 lbs) 4600 kg A2 (10,140 lbs)	4800 kg A1 (10,560 lbs) 5200 kg A2 (11,460 lbs)



BOBST folder-gluers: an indispensable companion to Auto-platen® presses

Over 250 types of boxes and specialties that have already been cut out and shaped on Auto-platen presses are finished just as successfully on Bobst folder-gluers. Bobst's line of folder-gluers includes over 15 models to meet the specific needs of your markets.

Ask for our detailed brochures.

BOBST 

Switzerland
Bobst SA
CH-1001 Lausanne
Tel. +41/21/621 21 11
Fax +41/21/626 12 70
<http://www.bobstgroup.com>

USA and Canada:
Bobst Group Inc.,
Harrison Avenue 146,
Roseland N.J. 07068
Tel. 973 226 8000
Fax 973 226 8625

Your agent

BOBST
GROUP

BOBST
GROUP

MEDIA II matic

A line of folder-gluers,
offering the best value
and performance
money can buy



BOBST 



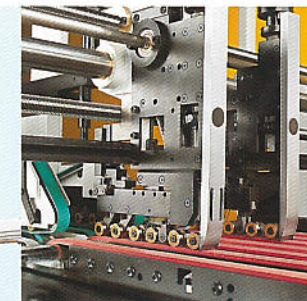
Folder unit:

The upper conveyors can be raised quickly, the belts changed easily and the guide rails and creasing rollers locked rapidly in place, allowing faster, simpler settings during job changeovers. The length of the folders was analysed to guarantee gradual, gentle creasing at all output speeds. They are able to insert the glue flap of disproportionate blanks without any special accessory. A miniature folder that can be readily fitted into the machine makes it possible to handle extremely small blanks.



Pre-breakers:

All the components of the long pre-break section were designed to facilitate and cut down on setting adjustments. The section can perform various tasks: pre-breakage of the first crease using the left pre-breaker with an adjustable pressure roller, pre-breakage of the third crease of standard and crash-lock-bottom boxes (A2 version) using the right belt-driven pre-breaker, folding of double-walled boxes, etc.

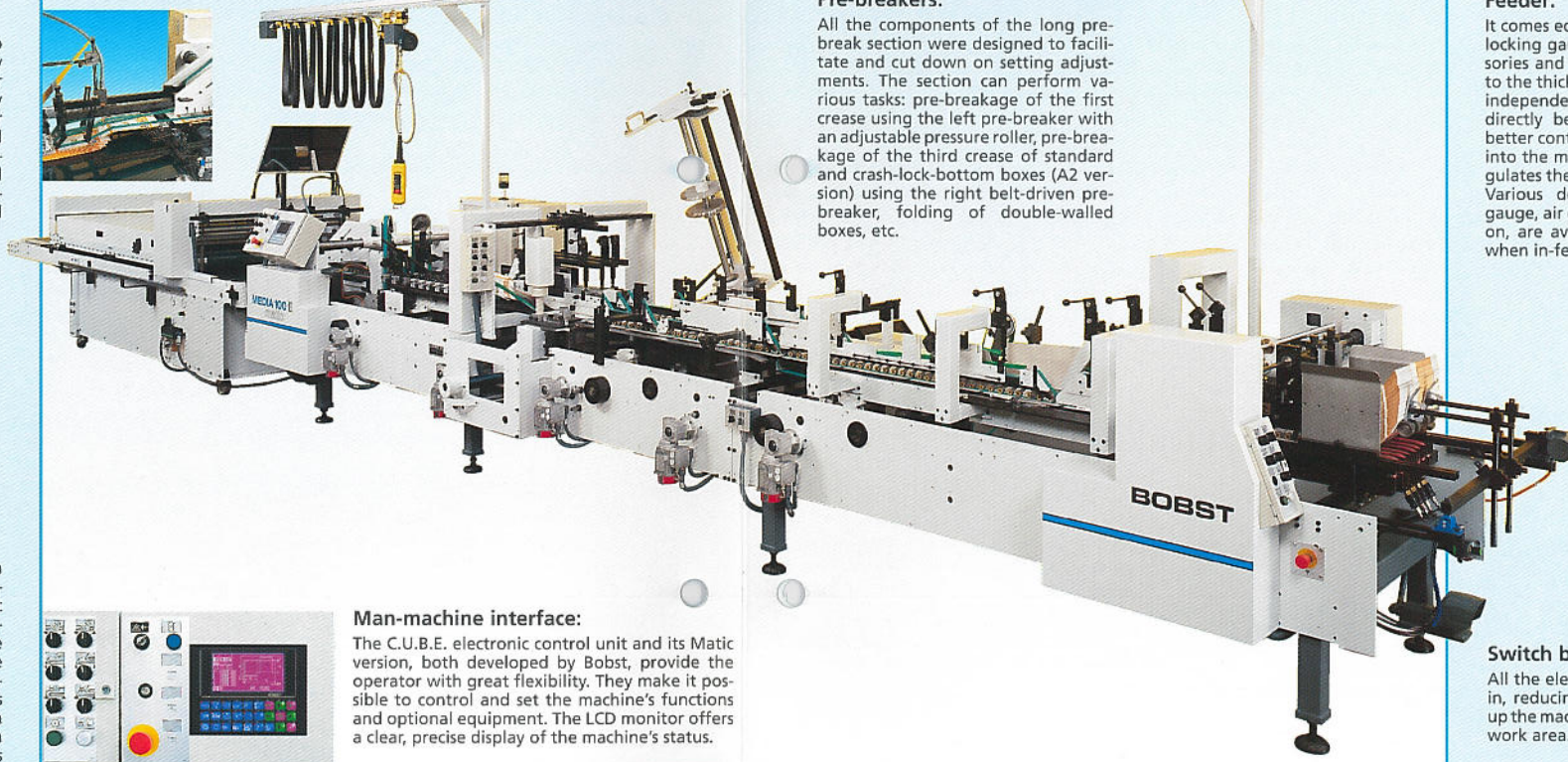


Feeder:

It comes equipped with off-centre locking gauges that require no accessories and adjust the feeder instantly to the thickness of the board. Tilttable, independent upper conveyors placed directly behind the gauges provide better control of the in-feed of blanks into the machine. A speed control regulates the space between the blanks. Various devices such as a geared gauge, air gauge, vacuum belts and so on, are available for special tasks or when in-feed is difficult to control.

Transfer section:

These units are specially designed to reduce setting requirements and easily accommodate automatic ejectors for machines equipped with quality control devices. The upper and lower arms can be adjusted vertically and forwards while the machine is operating. The lower arm can be motorised (optional). A pneumatic kicker adapted to the machine's speed forms and counts the batches produced.



Delivery station:

The MEDIA II Matic line features a pneumatically driven, easily adjustable independent delivery system. It comes equipped with a stream regulator that automatically controls the stream pitch preselected on the C.U.B.E. control. To avoid having unglued boxes when the flow of blanks in the folder-gluer is interrupted for a lengthy period, the delivery station starts up automatically and exerts pressure on the last glued blanks. Belt-driven in-feeders ensure a regular, precise stream of boxes at any operating speed. They are designed to accommodate a rectifier for lengthways delivery.

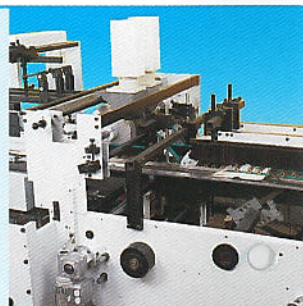
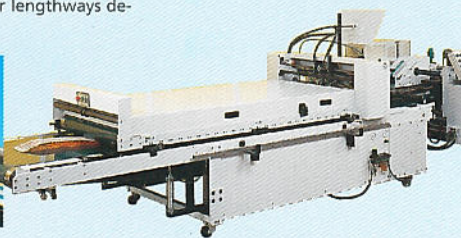
Man-machine interface:

The C.U.B.E. electronic control unit and its Matic version, both developed by Bobst, provide the operator with great flexibility. They make it possible to control and set the machine's functions and optional equipment. The LCD monitor offers a clear, precise display of the machine's status.



Crash-lock-bottom module:

This module, which can be added at any time between the pre-breakers and folders, makes it possible to pre-break the third crease of crash-lock-bottom boxes. Since most of the folding components stay in the module, job changeovers are easier and setting times reduced considerably. There is no need to adapt the pre-breakage section to switch from standard to crash-lock-bottom boxes and vice versa. Since it adds to the length of the folder-gluer, the module offers additional possibilities for pre-breaking and folding special multi-crease packaging. It can be equipped either with continuous glue applicators or extrusion guns and is already prepared to have one of the components of the 4- and 6-corner device attached.



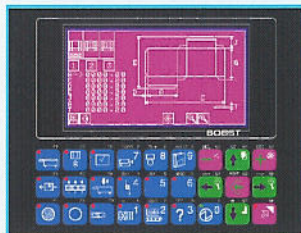
Switch boxes:

All the electric switch boxes are built-in, reducing the time required to set up the machine and saving space in the work area.

Operating ease

Matic version:

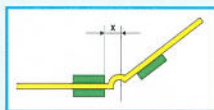
The MEDIA Matic is a programmable machine featuring 16 motorised axes. The Matic option that can be added to the C.U.B.E. control provides access to the following functions:



- Programming a job
- Adjusting the machine's settings based on stored data
- Storing a job with machine settings
- Storing the corrections made during production
- Adjusting the settings of optional equipment.
- It is possible to program and store over 500 jobs.

Machine settings are adjusted automatically, component by component. In order to ensure proper safety, the operator has to confirm the order while monitoring the components' movements.

Accurate settings are made possible by the machine's precision encoders, which constantly check the position of each vital part during setting adjustments. This precludes any error caused by a disturbance or developing over time.



Manually operated version

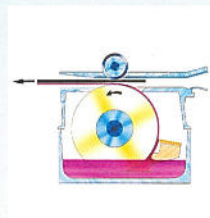
Indicators and graduated scales provide a rapid, optimal means of reactivating previously noted settings for repeat jobs.

This equipment can be supplemented with IBM/PC-compatible calculation software on diskettes, enabling you to capture the parameters of the blanks to be processed and print out a page showing the required settings.



Flexibility

Continuous gluing

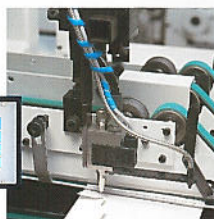


The lower applicator affixes a highly precise coating, thanks to a micrometric screw that regulates the quantity of glue and to a gluing disc perfectly centred on a conical shaft. A removable basin allows quick, easy cleaning and maintenance.

This system features continuous upper gluers for crash-lock-bottom, 4-corner and double-walled boxes, as well as other complex blanks.

Extrusion gluing

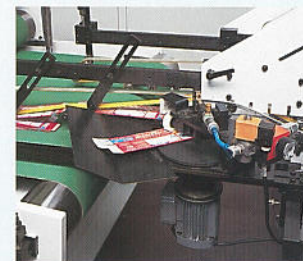
The extrusion system can replace most or all of the upper gluing stations. It consists of a programming unit featuring several channels and guns fitted with various types of nozzles.



Quality control



The Registron 5 3920 PCR « Kurandt » glue-line detector ensures perfect monitoring of the presence and quantity of glue on the lower line.

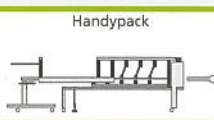
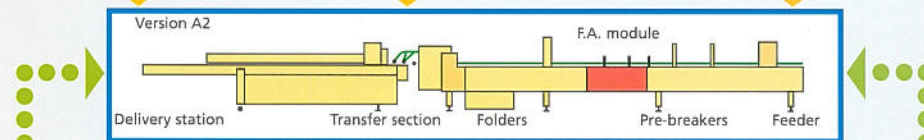
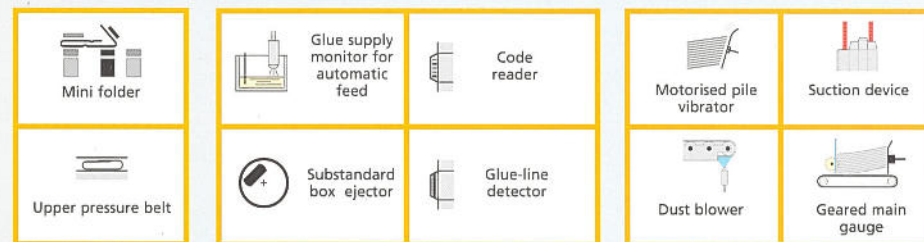


The unit features a rotary ejector for substandard boxes.



The Registron 5 3910 PCR code reader provides infallible control of batch specifications, uniformity and quality.

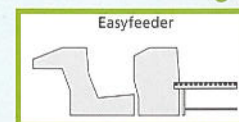
A complete system able to satisfy a wide range of production requirements

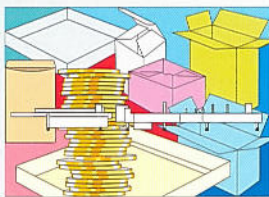


The various auxiliary equipment and accessories available for the MEDIA II series ensure optimal quality control and cost-efficient production

● Quality and productivity

● Operating facilities





Economical

- Less space required
- Able to perform a wide variety of jobs at lower cost



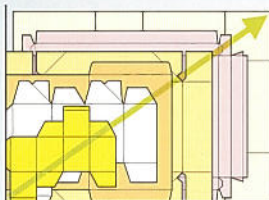
Easy to operate

- User-friendly
- Simple to run
- Quick, easy settings
- Optimal protection and safety



Extremely reliable

- Sturdy construction
- All components built with capacity to spare



Flexible

- Standardised design
- Able to handle a wide range of box types and sizes



Productivity and quality

- High, sustainable production speeds
- Impeccable precision, time and time again
- Quality control during production



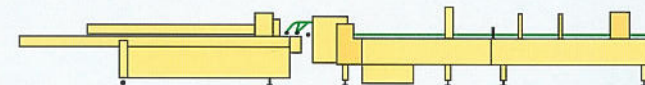
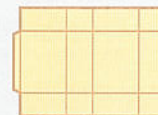
Easy to maintain

- Reduced upkeep
- Ready access to the machine's various components

Modular construction

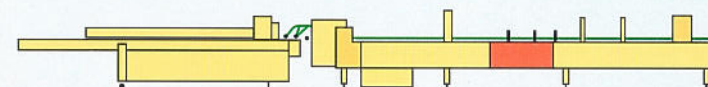
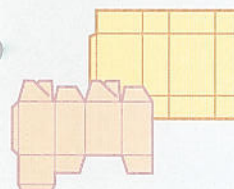
The MEDIA II Matic line is modular in design, making for quick job changeovers and high production speeds. With these machines, you will be equipped to handle all present and future job requirements.

A1 Version (MEDIA 45/68/100 II)



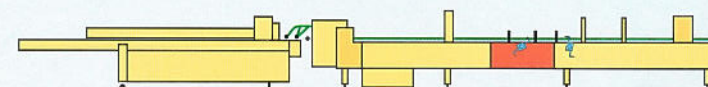
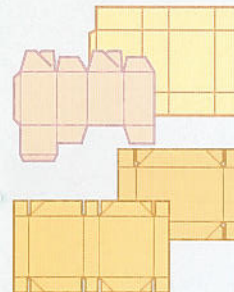
- Standard pre-broken boxes with 4 creases

A2 Version (MEDIA 68/100 II)

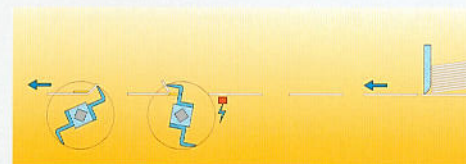


- Standard pre-broken boxes with 4 creases
- Crash-lock-bottom boxes with pre-breakage of the 3rd crease

A2 version 4- and 6-corner (MEDIA 68 / 100 II)



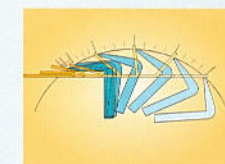
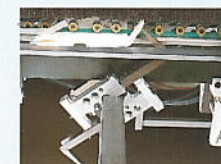
- Standard pre-broken boxes with 4 creases
- Crash-lock-bottom boxes with pre-breakage of the 3rd crease
- 4-corner glued boxes with no lid
- 4-corner glued boxes with lid and 6-corner glued boxes



Seamless production

Thanks to electronic guidance of the rotary folders, the blanks are fed in and transported continuously. This system provides many advantages:

- The rotary folders are synchronised automatically.
- Runs can be set up quickly.



Modulated speed

The speed of the rotary folders is modulated by an electronic cam. This ensures that the flaps are gripped gently and folded with increasing pressure, even at high speed. The modulated movement of the hooks adjusts automatically to the length of the flaps.