

FACT SHEET



DISCOVERY MExpress

Affordable, versatile & compact print data verification product for variable print inspection applications

PRODUCT OVERVIEW

DISCOVERY MExpress is a flexible, modular camera inspection system for your print data verification needs. Easily mounted within digital print production processes, it offers a productized approach to a range of inspection requirements from simple code presence, to variable data verification.

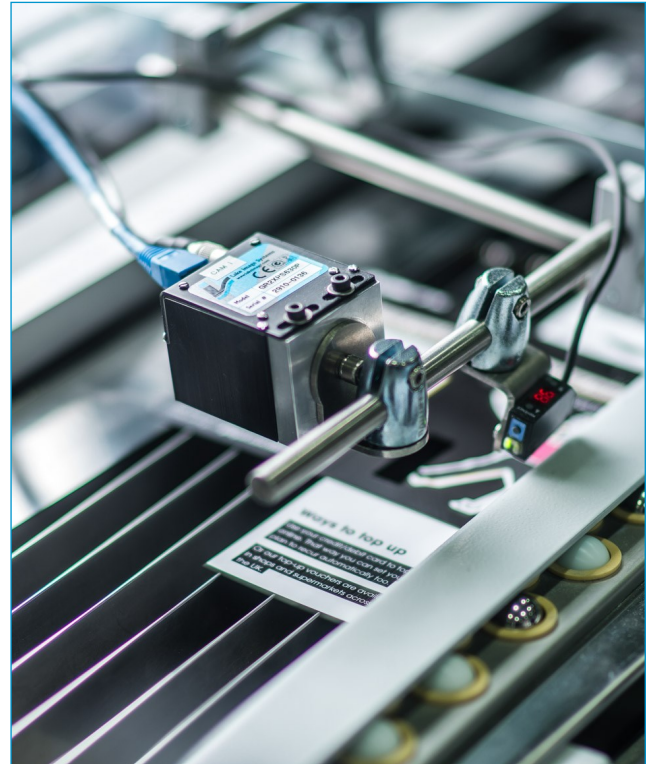
DISCOVERY MExpress key features:

- **Compact & Affordable** - Complete, versatile, modular camera inspection unit
- **Intelligent Inspection** - simple code presence to variable data verification using OCR and machine readable codes
- **High Speed** - up to 40,000 pieces per hour
- **Manufacturing Equipment Control** - alarms, diverts, equipment stop
- **Easy to Use & Intuitive Design** - quick set-up with comprehensive capability.

DISCOVERY MExpress is available:

- **As a Packaged Solution** - An inspection camera with integrated LED lighting and a Mini-PC unit
- **Optional camera and lighting configurations** – for different substrates and fields of view
- **Fully Configured & Supported** - for fast installation.

OEMs can easily integrate the unit onto their equipment either as a standard or optional print verification feature for their clients.



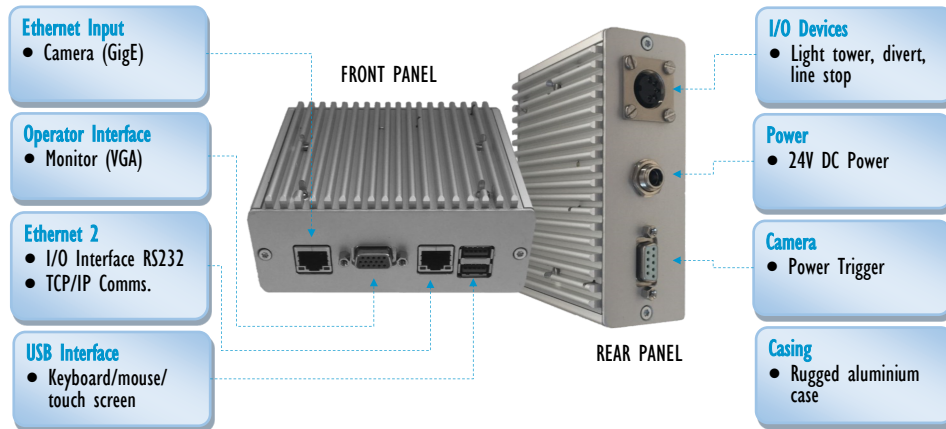
DISCOVERY MExpress: Mini-PC and GR 2 Inspection Camera with integrated LED lighting



FACT SHEET



MINI-PC: CONNECTIVITY



FEATURES

Print Verification

- Text / OCR : Full Alphanumeric font trainable by system operator.

ID & 2D Barcodes

- EAN 13 & EAN 8
 - OMR
 - Datamatrix
 - PDF417
 - QR Code
 - Optional IMB and OCV (Optical Character Verification)
- UPC A & UPC E
 - Code128, Code39 & Code93
 - 2/5 discrete & Interleaved
 - Pharmacode

Equipment Control

- Control on error: Divert/Stop - optional
- On-screen live display of defects - optional
- Operator Light & Audible Alarms/Warnings - optional
- Marking & flagging device - optional

Easily Set-up

- An intelligent, fast camera & verification tool set-up
- Smart, quick system set-up with minimal sensor adjustments

Reporting & Data Integration

- Real-time logging/reporting/data collection (optional)

SYSTEM

- *Fully integrated* unit - GigE camera with integrated LED lighting, a Mini-PC running DISCOVERY Read and Verify software tools on a MS Windows 10™ platform.

- Inspection Speeds: up to 40,000 items/hour

Camera

- Camera: GR2 Integrated Camera module
- Resolution: 1280 x 1024 pixels
- Camera Interface: GigE Ethernet
- Lighting: Integrated long life L.E.D.

Fanless Industrial Mini-PC

- OS: Windows™ 10 (64bit)
- Connectivity: Ethernet(x2), VGA, USB(x2),
- I/O interfaces: 4xOutputs, 2xInputs. RS232 Port
- Interfaces: Monitor, keyboard/mouse. Touch screen (optional)
- Housing: Rugged aluminium case
- Dimension: 120mm(L) x 125mm(W) x 47mm(H)

Installation / Integration

- Simple configuration, installation & integration
- Documentation, remote technical support and training
- Warranty: 1 Years

Options

- Cameras: Up to 5 Megapixels
- Lighting: a range of lights for use with standard cameras
- Standard camera brackets for easy installation.

APPLICATIONS & USES

- **Competitively priced** - An intelligent print verification & inspection solution at an entry level price
- **Machine independent** - Can be retro-fitted to most existing printing, labelling & packaging equipment
- **Reliable** - 100% print data verification & control
- **User-Friendly** - Faster set-up & logical GUI layout
- **Supported** - Comprehensive maintenance contracts featuring remote diagnostics

BENEFITS

- **Lower Costs** - Automatically capture product and print quality defects. Prevents costly returns, rejects and repackaging
- **Improved Productivity** - Automate print quality inspection processes for high speed production
- **Less Scrap / Less Waste** - Immediately prevent costly scrapping of large runs of defective print
- **Mitigate risks** - Ensure all jobs comply with customer requirements and government regulations

Lake Image Systems Ltd
The Forum Icknield Way Tring
Hertfordshire HP23 4JX England
T: +44 (0)1442 892700
F: +44 (0)1442 892792
E: sales@lakeimage.com



Lake Image Systems Inc
205 Summit Point Drive Suite 2
Henrietta NY 14467 USA
T: 001 585 321 3630
F: 001 585 321 3788
E: salesna@lakeimage.com

Lake Image Systems Asia
33 Ubi Avenue 3 #03-07,
The Vertex, Tower B
SINGAPORE 408868
T: +65 6509 0192
E: LISasia@lakeimage.com

Copyright ©2022 Lake Image Systems.
All rights reserved.

