

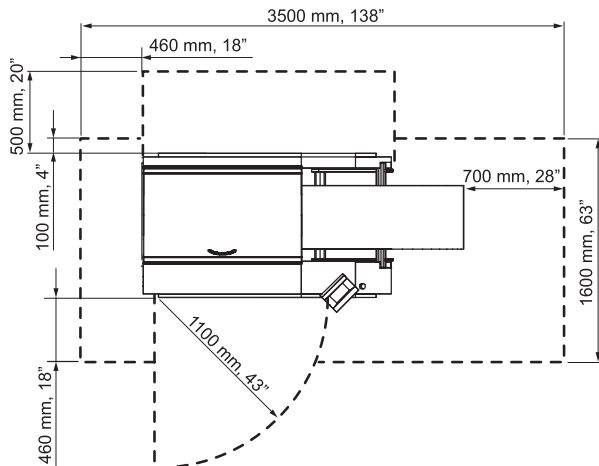
Unwinder u9

Enhanced application flexibility



- ✓ **Speed up to 500 fpm (150 m/min)**
- ✓ **Reliable feeding**
- ✓ **Accommodates broad range of papers**
- ✓ **Maximum printer productivity**
- ✓ **Unattended printing**

Service Area



Technical Specifications

Performance / Media

Speed max. 500 ft/min 150 m/min
Faster speeds are supported for certain printers - consult your TecnaU rep. for info

Feeding pinfed or pinless

Web tension loose or tight

Paper weight 10.5# bond - 110# cover, 40 - 300 gsm
above 180 gsm heavy paper kit required

Roll diameter 4" - 52" 100 - 1320 mm

Roll weight max. 1764 lbs. 800 kg

Web width 8" - 22" 200 - 559 mm

Core sizes 3", 5", 6" 70, 150, 200 mm

Options

Splice table convenient transition from rolls

Roll carts easily move, store and load paper rolls

Electrical

Power 200-240 Vac, 1-phase, 50/60 Hz, 10A

Consumption 1800 W (in use), 120 W (idle)

Heat output 1150 BTU/h, 337 W

Environmental

Temperature 60 - 90° F 15 - 32° C

Acoustics 65 dB(A)

Humidity 50 ± 10%

Dimensions

Length (incl. max roll) 95" 2400 mm
 (excl. max roll) 72.8" 1850 mm

Width 41.7" 1060 mm

Height (incl. display) 49.8" 1280 mm

Weight 1830 lb 830 kg

Color dark grey

Approvals

CE (2006/42/EC), EMC Class A, LVD,
 CB EN 60950, cULus 60950-1,
 FCC15 Class A

Product Specification



23112017

©2017 TecnaU. All rights reserved. The TecnaU name and logo are trademarks of TecnaU. TecnaU reserves the right to make any technical amendments without prior notification.



TECNAU
 w w w . t e c n a u . c o m

Europe	Italy	+39 0125 631678	info.it@tecnaU.com
	Sweden	+46 372 256 00	info.se@tecnaU.com
Americas	USA	+1 978 608 0500	info.us@tecnaU.com
Asia Pacific	China	+86 159 00710147	info.cn@tecnaU.com
	Singapore	+65 6793 9478	info.sg@tecnaU.com