

ORC-310A / ORC-315 Cover feeder

Cover Sheet Setting



IMPORTANT

Osako's cover feeder setting is properly done before shipment to eliminate the customer's further adjustment. As a standard use, the customer is required to follow ONLY I. BASIC SETTING instruction.

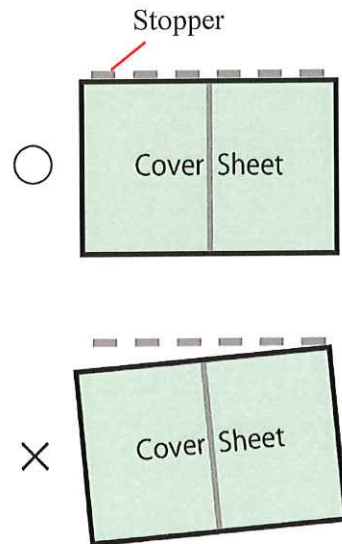
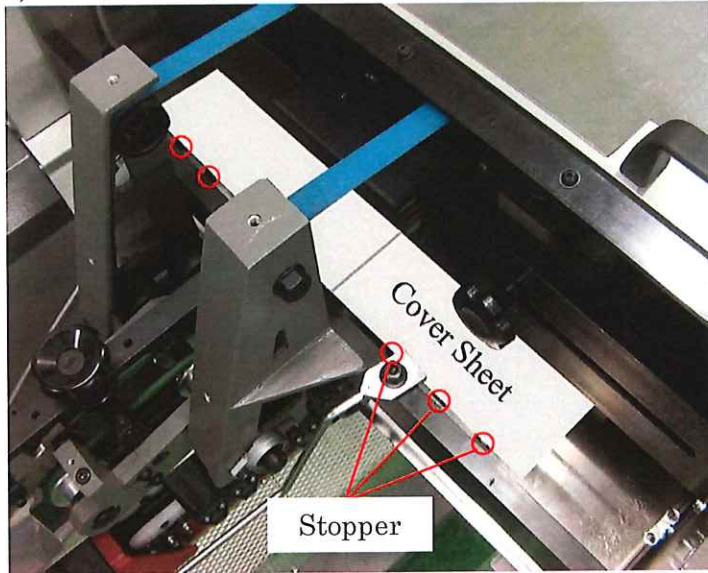
If factory setting happens to be in disorder, then follow II. RETURN TO FACTORY SETTING.

I. BASIC SETTING

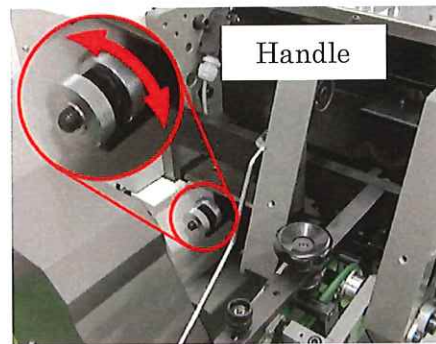
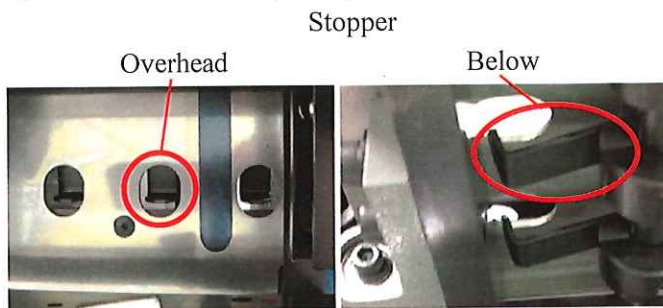
As a standard setup, follow below adjustments 1 to 3.

1. ADJUST STOPPER

- a) Stop the cover feeder where the creased cover sheet touches stoppers. Check if the cover sheet is stopped EVENLY by all the stoppers.
- b) If not, the cover sheet is not delivered straight. Then make necessary adjustments.

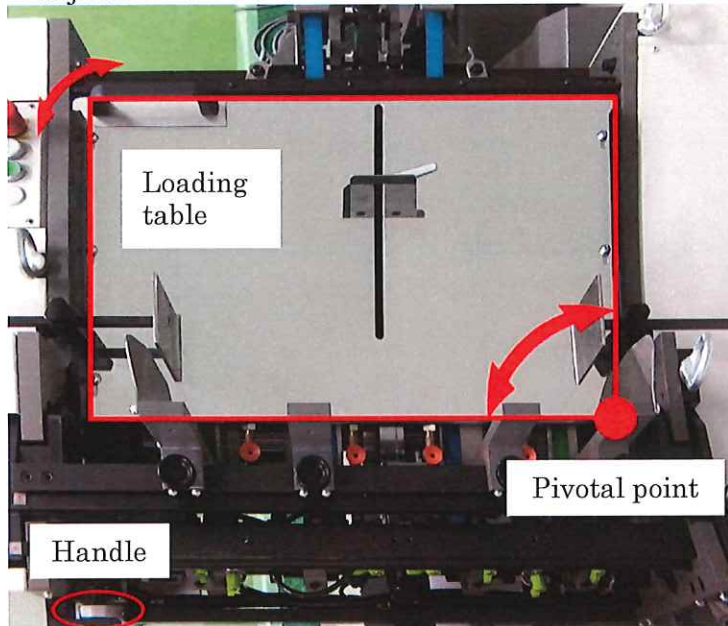


- c) Use the handle to adjust squareness.



2. ADJUST LOADING TABLE

a) The entire loading table moves around the pivotal point. In order to set squareness, make adjustment with the handle.

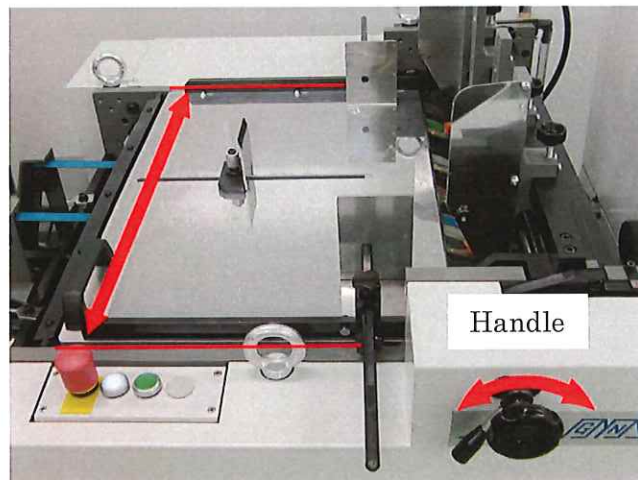
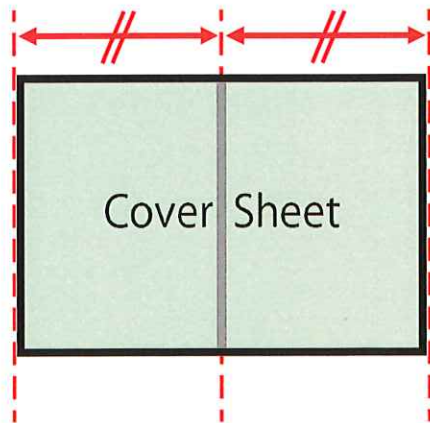


Handle



3. PLACE LOADING TABLE IN THE CENTER

a) In order to place the loading table in the center, make necessary adjustment with the handle.



IMPORTANT

Generally the above are only procedures necessary for customers. If the factory setting happens to be disordered, then follow II RETURN TO FACTORY SETTING described on the following section.

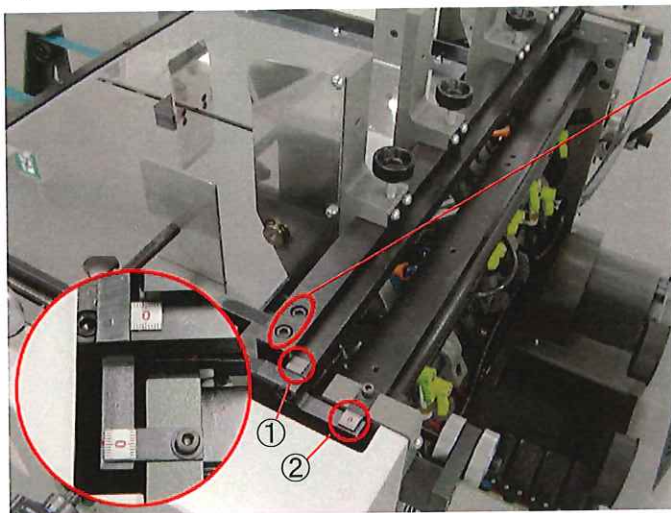
II . RETURN TO FACTORY SETTING

1. BEFORE YOU START ANY PROCEDURES

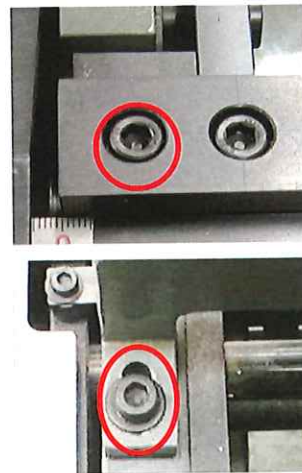
Do three procedures described on the above I . BASIC SETTING.

2. START SETUP

- a) Make sure BOTH measures ① and ② indicates 0.
- b) Do not loosen ③bolts at this stage. * There are different types of ③bolts.



*③Different bolt types



3. ADJUST GAP BETWEEN TABLE EDGE AND GUIDE

- a) Loosen the above ③bolts.
- b) Make sure the distance between the guide and the table edge is the same on both sides.
- c) Tighten ③bolts.

